





MODULAR CABINET this cabinet is constructed from identical sheets with a hole in each corner. They are assembled using lasered components and screws and bolts. Instead of the aluminium sheets we have used to make this cabinet, you could use any material at all, as long as the sheet is straight, as we have discovered. As the sheets are joined together corner to corner, their thickness doesn't really matter. The system is equally as conceptual as the other objects we are presenting, but it is also practical. They are packaged per four or six units in a box and you assemble them yourself. Yet another product that you have to put together yourself, even though they have never been successful for us. The four units can also be assembled horizontally to create a coffee table.

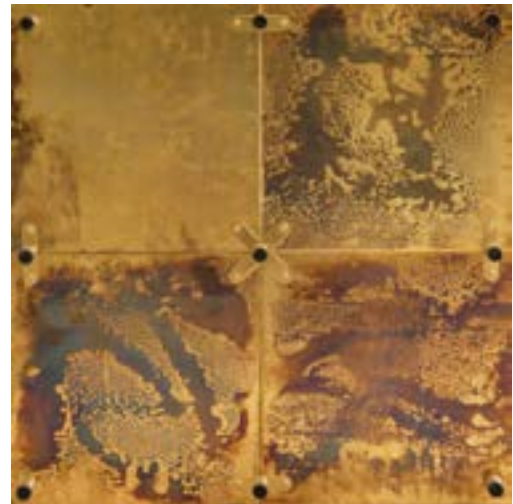
art nr	1420
year	2019
size	41 x 41 cm
material	aluminum





MODULAR COFFEE TABLE

art nr	1421
year	2019
size	40 x 40 cm cubes
material	aluminum



available in different materials.

art nr 1425	aluminum
art nr 1426	brich wood
art nr 1427	copper
art nr 1428	brass
art nr 1429	plexiglass

