

Instruction manual

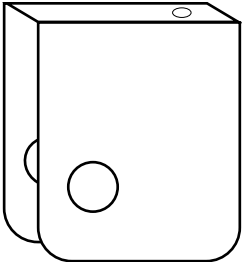
LINE LAMP



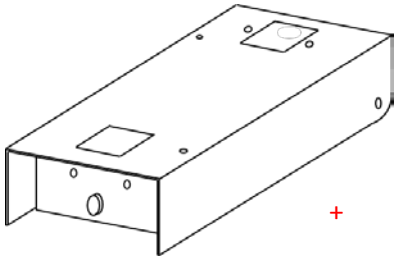
Instruction manual Line Lamp

Components

- a : Hanging bracket
- b : Box with transformer
- c : Fixture

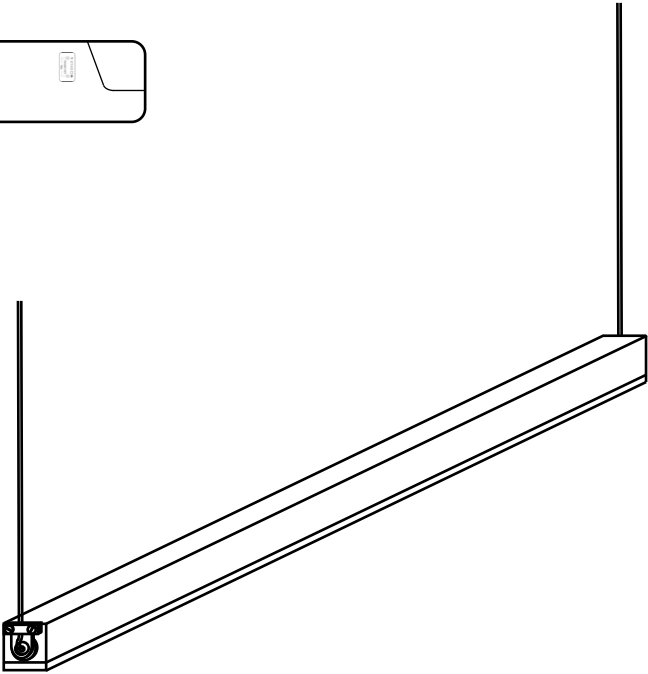


a



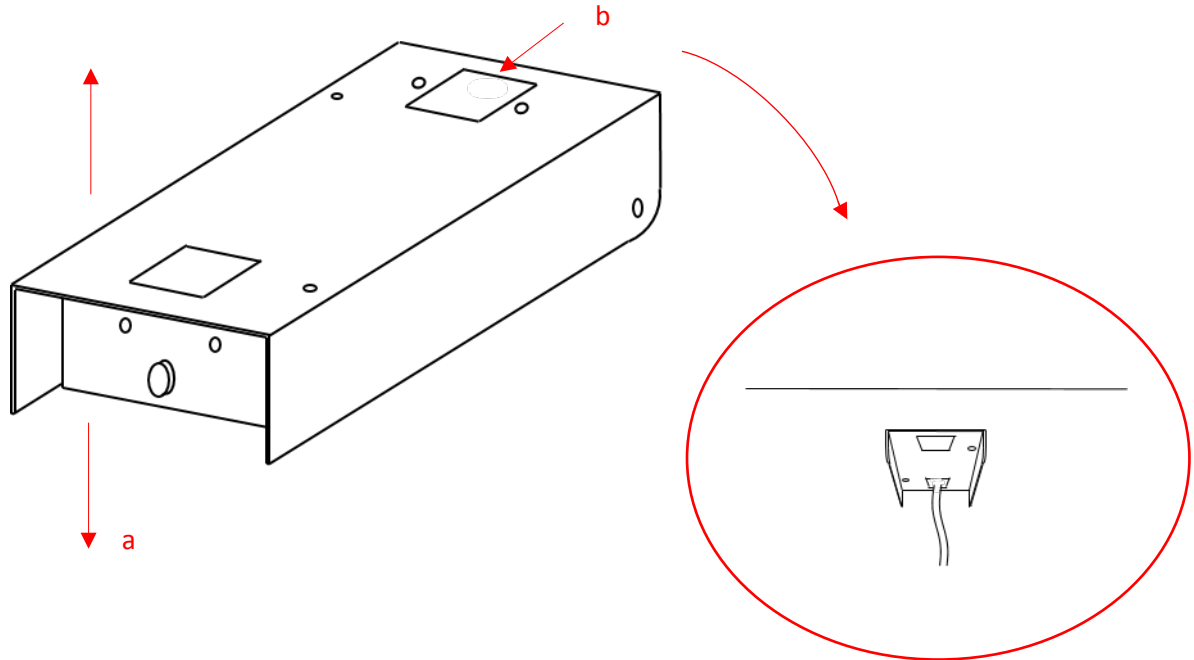
b

+



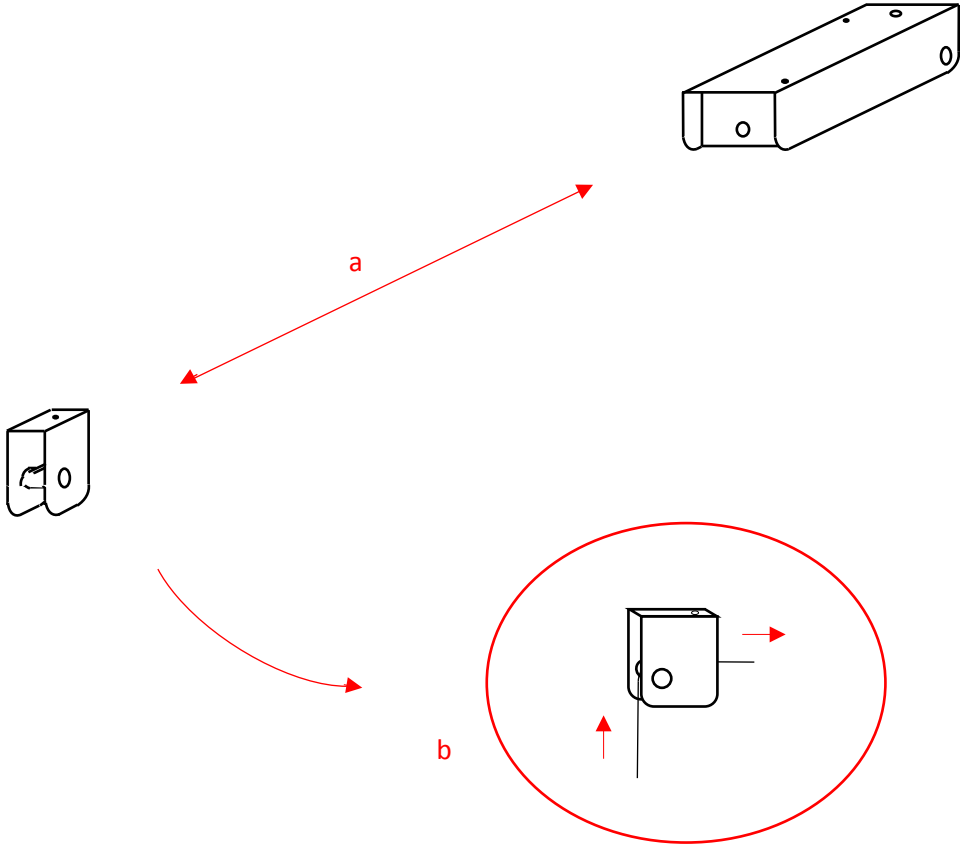
c

Step 1



In order to connect the wires to the transformer, you must first remove the cover of the box **(a)**. The top cover can be mounted directly in the right place on the ceiling, so that the electricity wire from the ceiling can be put through the large opening in the cover **(b)**.

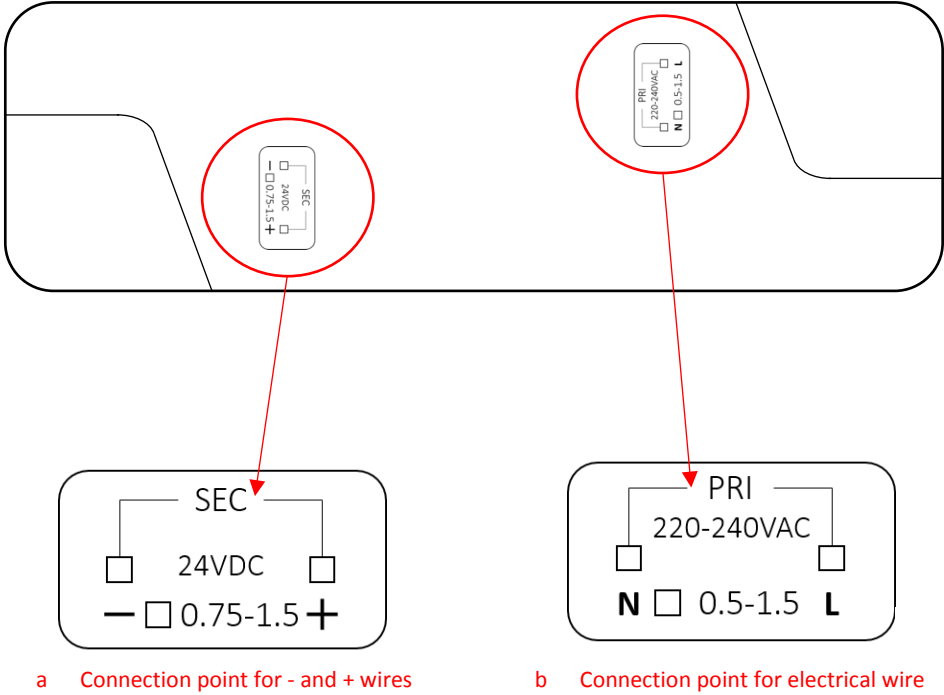
Step 2



The hanging bracket can then be secured to the ceiling. Make sure that the box and the bracket are mounted in a straight line, and with the correct distance between them (so that the wires will hang straight down) **(a)**.

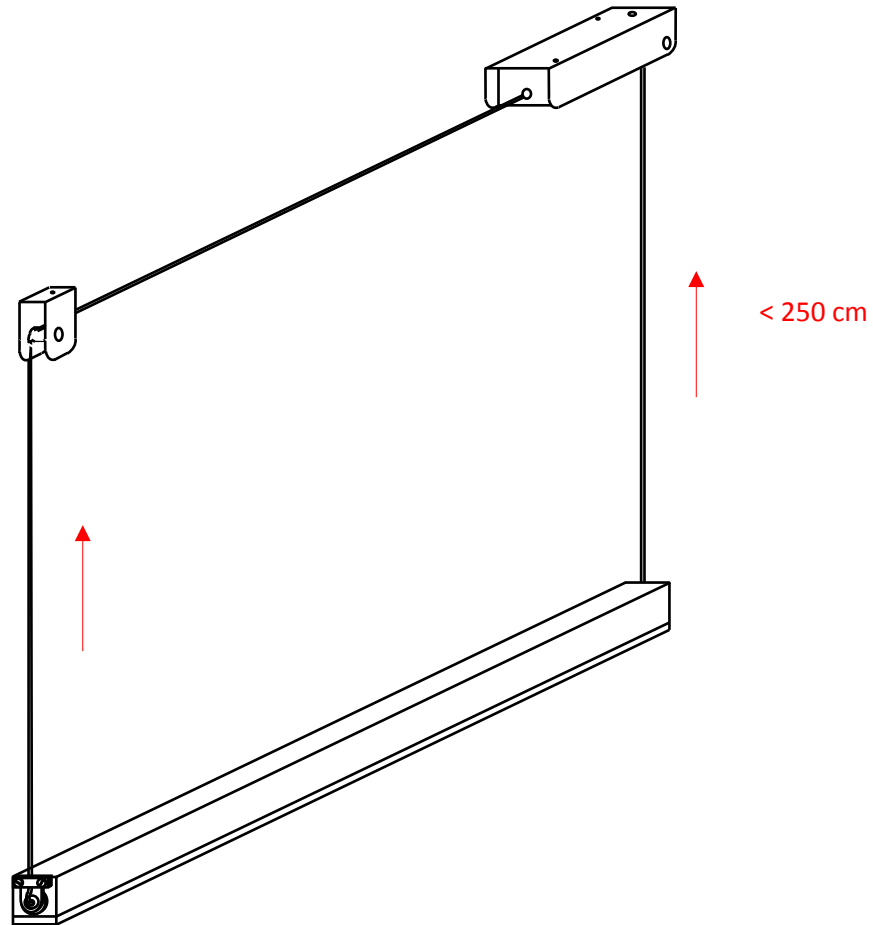
The fixture has a wire at both ends. The long wire is the negative wire (**-**), the short one is the positive wire (**+**). The long wire should be put through the bracket, creating a bend in the wire that is supported by the bracket **(b)**.

Step 3



The negative and positive wires should be connected to the transformer. There are connection points at both ends of the transformer, as shown above. Make sure that you connect the wires at the - and + symbols of the transformer (a), which can be found on one side. The electricity wire from the ceiling should be connected to the other connection point (b).

Step 4



When the wires have been connected, the bottom of the box can be secured to the top cover, which has already been secured to the ceiling as described in step 1. **Note:** the distance between the fixture and the ceiling, so the length of the wires, should not be more than 2,5 meters.