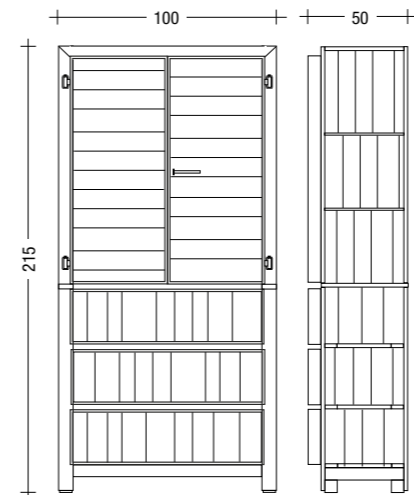




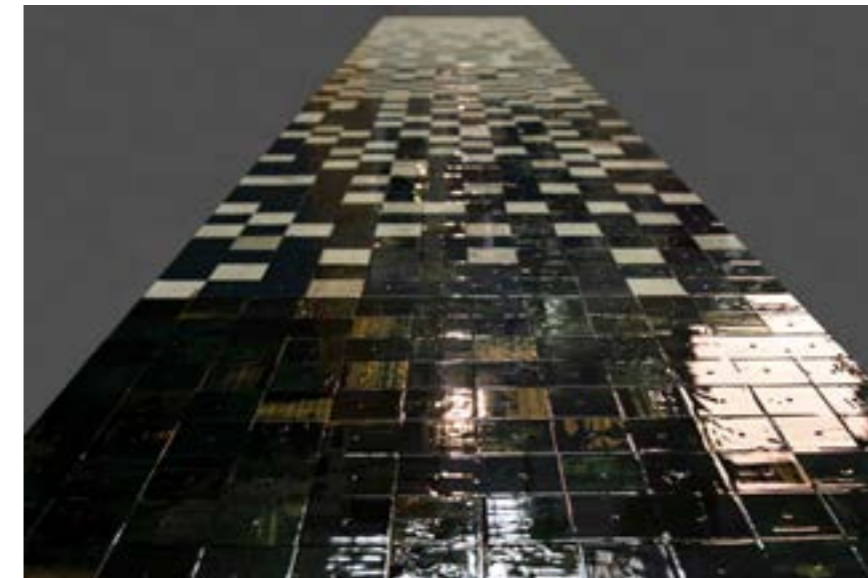
 **PIET HEIN EEK**

MADE IN EINDHOVEN / THE NETHERLANDS



CLASSIC CUPBOARD IN SCRAPWOOD The Classic Cupboard was Piet Hein Eek's first piece exploring scrapwood material, and is meticulously crafted in Piet Hein Eek's studio using traditional wood-working techniques. It is produced without a lacquer finish for a full expression of the wood's texture. Each piece is unique, based on the material available at the time.

art nr	2400
year	1990
size	100 x 50 x 215 cm
material	scrapwood / pinewood
rrp	euro 4.281



color	available in various colors of scrapwood
details	2 doors + 3 large drawers
inside cabinet	10 small drawers + 2 shelves

40 x 40 CUBE SERIES

art nr	3890-77A
year	2019
size	48 x 48 x 48 cm
material	scrapwood
rrp	euro 5.938



art nr	3890-77B
year	2019
size	48 x 48 x 48 cm
material	scrapwood
rrp	euro 4.750



art nr	3890-77C
year	2019
size	48 x 48 x 48 cm
material	scrapwood
rrp	euro 5.938



art nr	3890-77D
year	2019
size	48 x 48 x 48 cm
material	scrapwood
rrp	euro 4.750

art nr	3890-77E
year	2019
size	48 x 48 x 48 cm
material	scrapwood
rrp	euro 4.750



art nr	3890-77F
year	2019
size	48 x 48 x 48 cm
material	scrapwood
rrp	euro 5.938



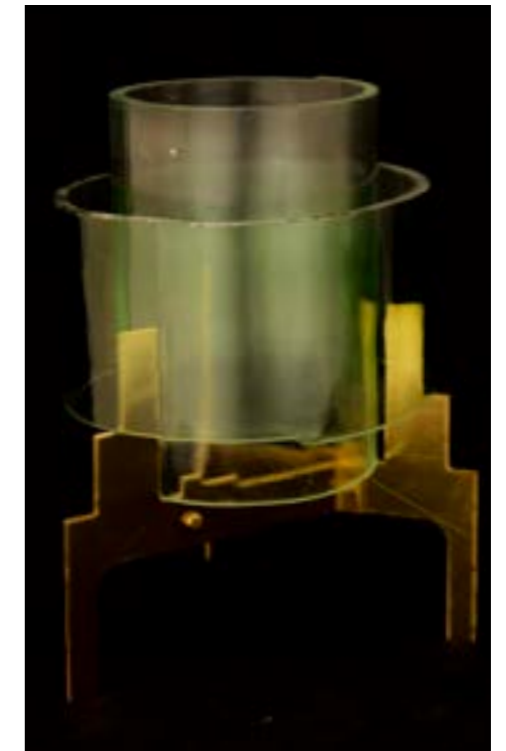
art nr	3890-77G
year	2019
size	48 x 48 x 48 cm
material	scrapwood
rrp	euro 4.750



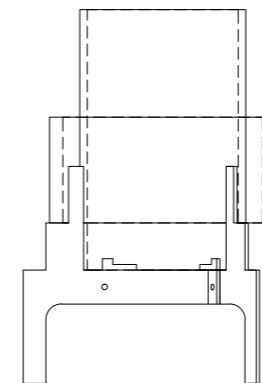


40 x 40 SIDE TABLE 2 COLORS

art nr	3890-76
year	2019
size	58 x 58 x 72 cm
material	scrapwood
rrp	euro 8.874

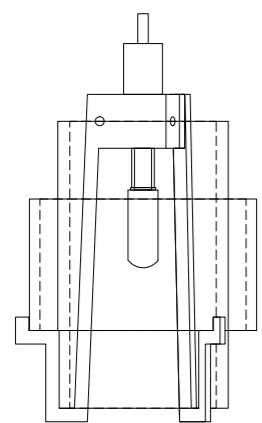


**CUT GLASS
CANDLEHOLDER**



art nr	-
year	2019
size	ø 9,5-12,10 x 19,8 cm
material	cut glass / brass
rrp	euro 89

art nr	-
year	2019
size	ø 9,5-12,10 x 19,8 cm
material	cut glass / brass
rrp	euro 139



CUT GLASS LAMP

art nr	-
year	2019
size	ø 9,5-12,10 x 19,8 cm
material	glass / brass
rrp	euro 149

RAG VASES



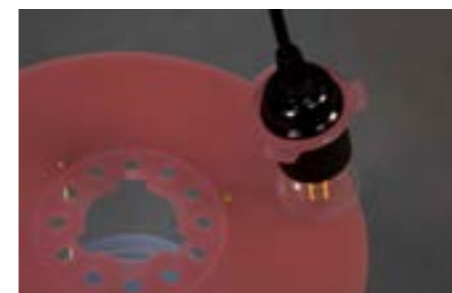
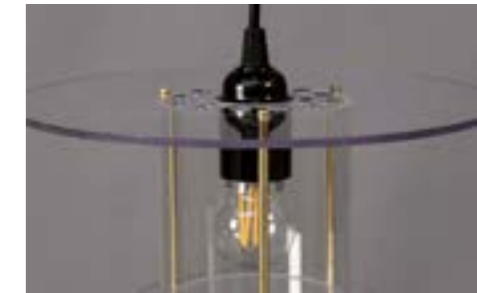
art nr	unique / limited
year	2019
size	different sizes available
material	old tubes
rrp	euro 475

2019 AJUSTED 2009 CRISIS CHAIR Personally, I find one of the better collections but after checking the sales figures, it seems I am one of the few. Such a difference in opinion is never much fun, so I'm trying again. The 2009 crisis series, updated in 2019, will be presented during DDW this year. Worst case scenario is that the reintroduction becomes a non-selling classic.

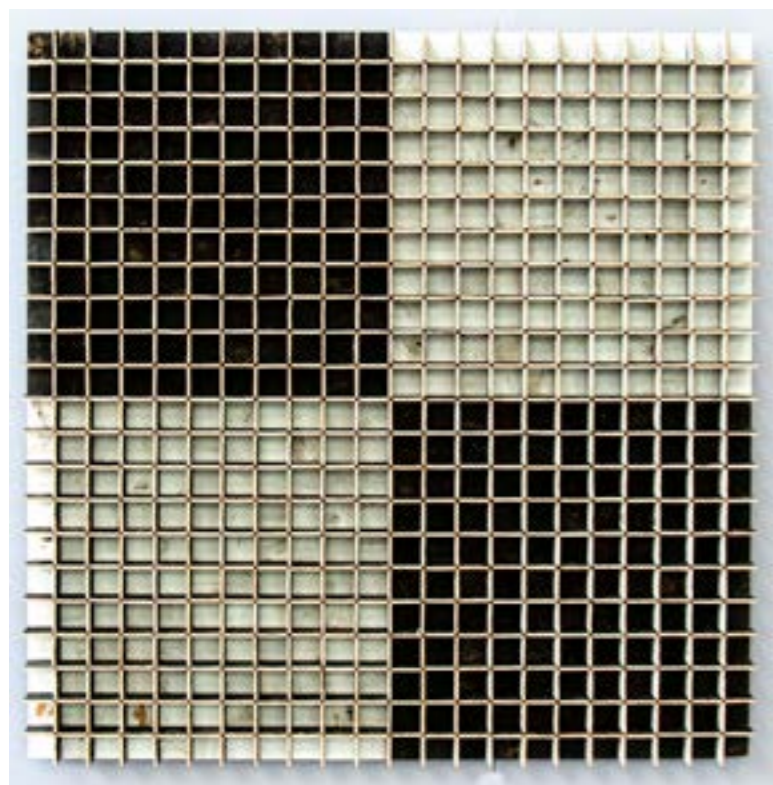


art nr	1652 (2019)
year	2019
size	40 x 48 x 85 (48) cm
material	pine wood
rrp	euro 235

PLASTIC LAMP HANGING

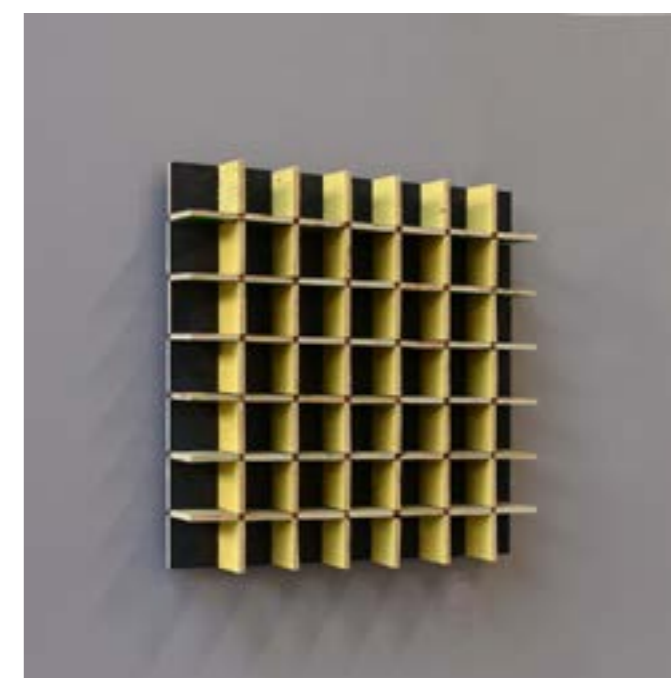
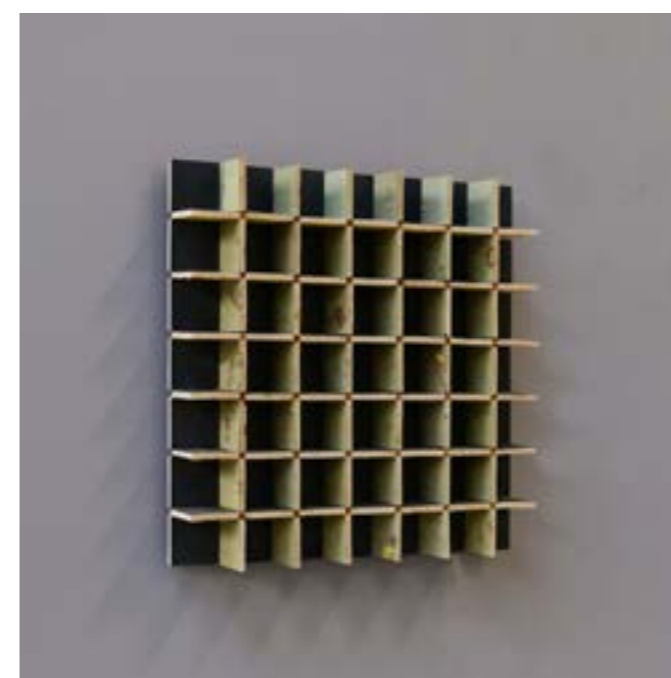
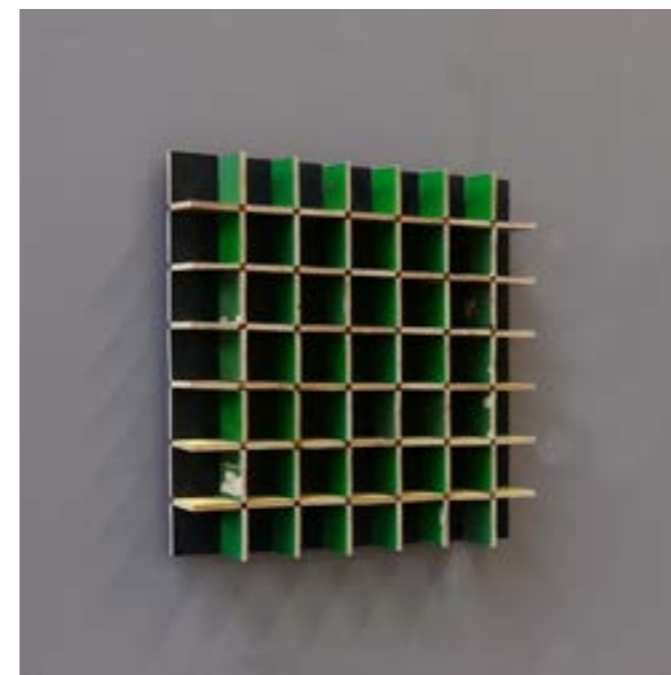


art nr	-
year	2019
size	ø 25 x 11 cm
material	plastic / brass
rrp	euro 130

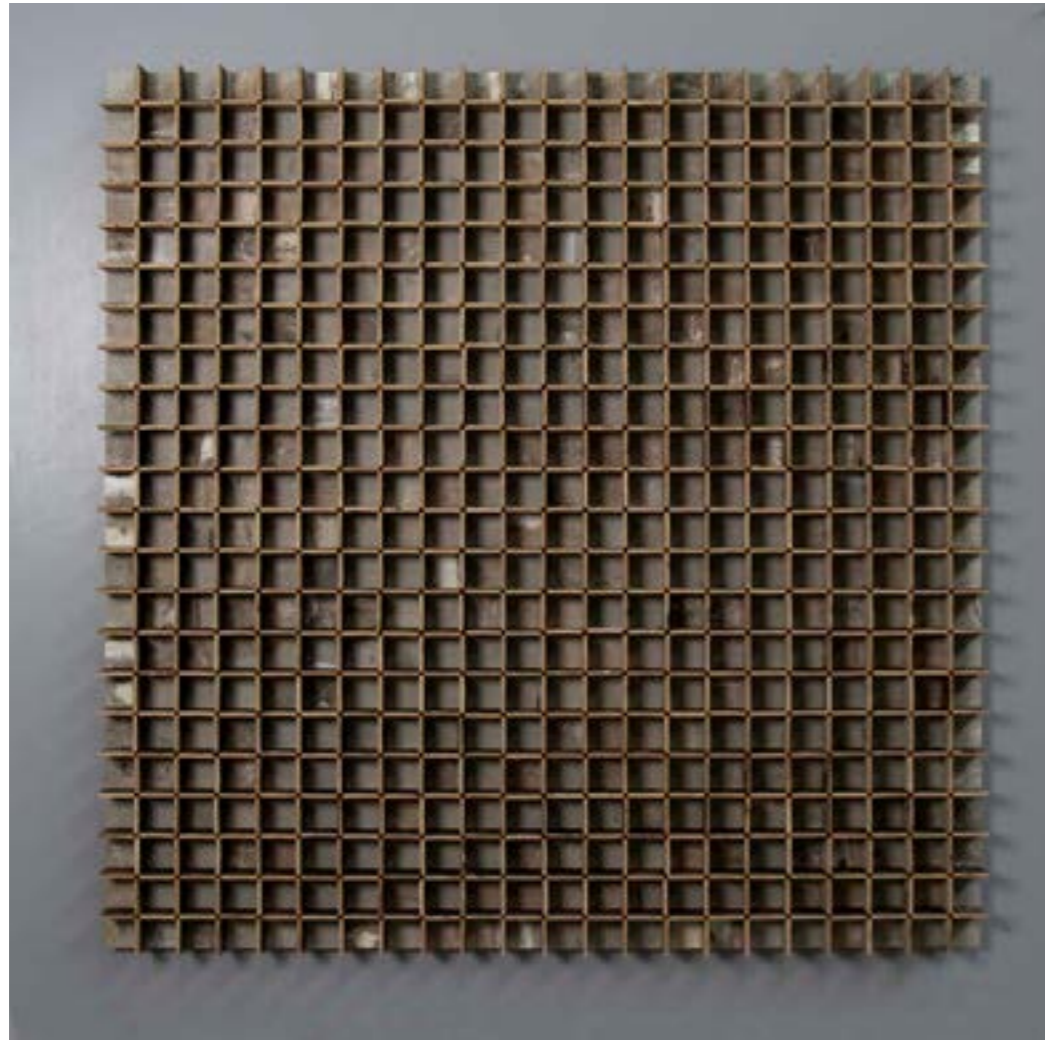


3D 40 x 40 PAINTING

art nr	3890-85
year	2019
size	298,5 x 98,5 cm
material	scrapwood
rrp	euro 10.500



art nr	3890-84
year	2019
size	26,5 x 26,5 cm
material	scrapwood
rrp	euro 3.200

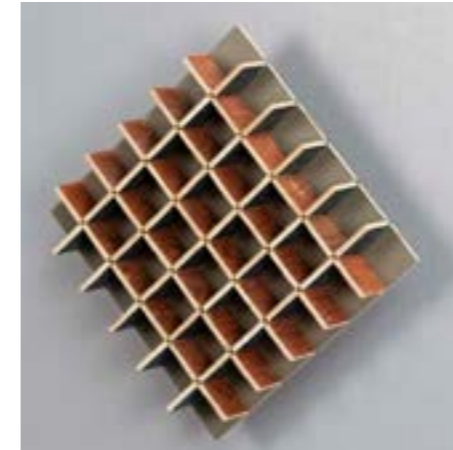
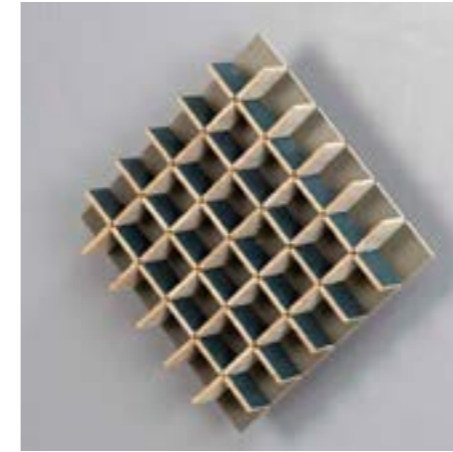


3D 40 x 40 PAINTING

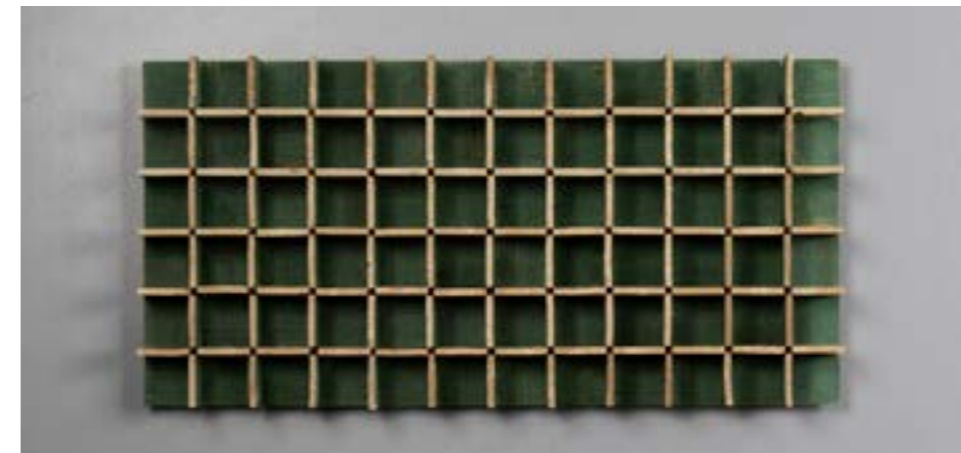
art nr	3890-66
year	2019
size	298,5 x 98,5 cm
material	scrapwood
rrp	POA



art nr	3890-64
year	2019
size	53,5 X 26,5 cm
material	scrapwood
rrp	POA



art nr	art (3890-67)
year	2019
size	26,5 x 26,5 cm
material	scrapwood
rrp	POA



art nr	art (3890-66)
year	2019
size	53,5 x 26,5 cm
material	scrapwood
rrp	POA



MODULAR CABINET this cabinet is constructed from identical sheets with a hole in each corner. They are assembled using lasered components and screws and bolts. Instead of the aluminium sheets we have used to make this cabinet, you could use any material at all, as long as the sheet is straight, as we have discovered. As the sheets are joined together corner to corner, their thickness doesn't really matter. The system is equally as conceptual as the other objects we are presenting, but it is also practical. They are packaged per four or six units in a box and you assemble them yourself. Yet another product that you have to put together yourself, even though they have never been successful for us. The four units can also be assembled horizontally to create a coffee table.

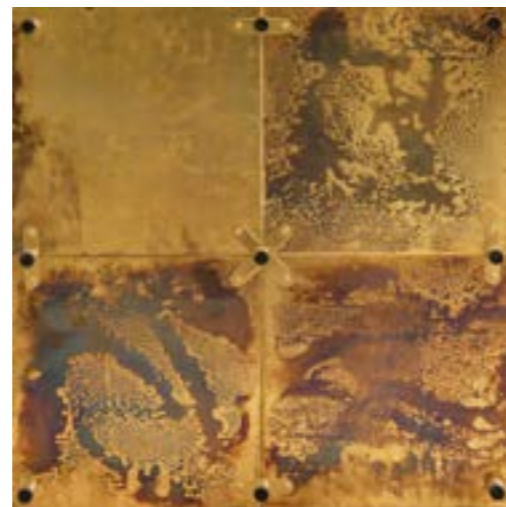
art nr	1420
year	2019
size	41 x 41 cm
material	aluminum
rrp	euro 4.100 (as shown)





MODULAR COFFEE TABLE

art nr	1421
year	2019
size	40 x 40 cm cubes
material	aluminum
rrp	price on request



available in different materials.

art nr 1425	aluminum
art nr 1426	brich wood
art nr 1427	copper
art nr 1428	brass
art nr 1429	plexiglass



INSIDE OUT TREE TRUNK The inside out bench we presented April 2018 in Milan. Later we made another one, but we wanted to show some variations on the *inside out* theme: a totem of square blocks and regular inside out blocks that you can use however you like. Turning a tree inside out is very efficient in terms of wood, and is a bit of fun for us, but not in terms of work. It costs a great deal of time and attention to turn a trunk inside out.



art nr	INSIDE OUT TOTEM - nr. 4
year	2018
size	36 x 36 x 36 cm
material	oak
rrp	euro 1.795 per block

art nr	INSIDE OUT BENCH - nr. 2
year	2018
size	108 x 26 x 45 cm
material	oak
rrp	euro 4.698

art nr	INSIDE OUT BENCH - nr. 3
year	2018
size	229,5 x 28,5 x 49 cm
material	oak
rrp	euro 4.7



art nr	limited / unique
year	2019
size	35,5 x 35,5 x 209,90 cm
material	oak
rrp	euro 14.360



CUT ANTENNA TREE TRUNK

art nr	unique / art / concept
year	2019
size	45 round x 500 cm
material	salvaged wood
rrp	euro 4.500

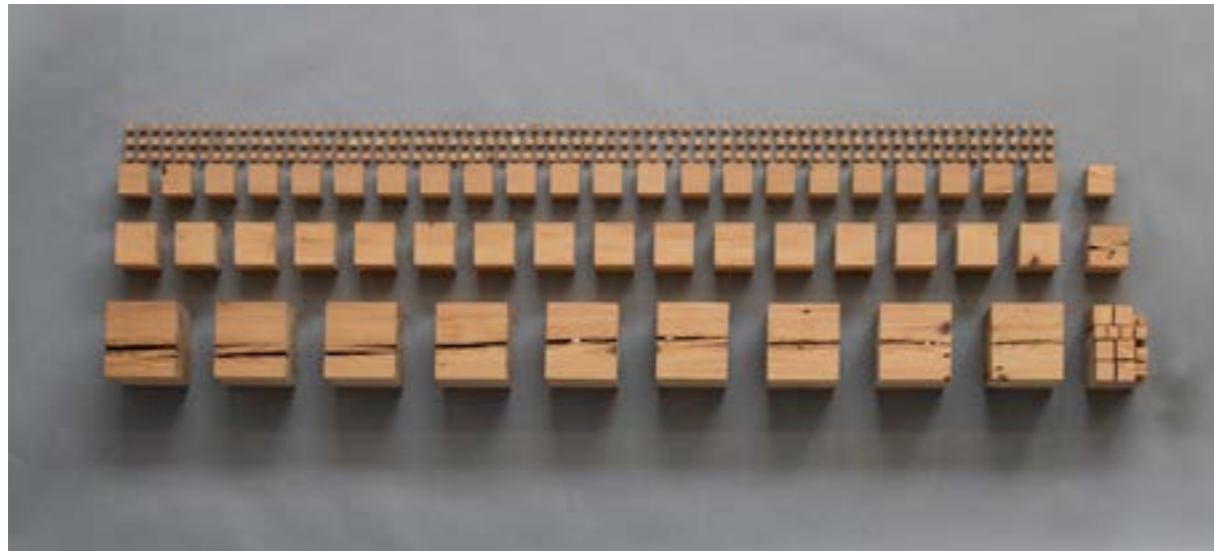
this piece is not shown at our exhibition during DDW 2019



78 x 78 WASTE WASTE TABLE

art nr	limited / unique
year	2019
size	210 x 78 x 78 cm
material	scrapwood
rrp	euro 12.372

this piece is not shown at our exhibition during DDW 2019



BEAM BECOMES BLOCKS

art nr	art / concept
year	2019
material	deal wood
rrp	€ 3.200



BEAM BECOMES BLOCKS we saw a beam repeatedly across the thickest part into exact squares so that we are left with nothing but cubes. Or a step further: we use a beam to saw a box and make a block box using nothing but cubes in the same way from the core wood. In other words, the maximum number of largest possible cubes you can get out of one beam. Is it all worth it? I don't know. If nothing else, it says something about how I think and work, and you must first have worked like this in order to say that. I couldn't have made this at the beginning of my career.

BEAM BECOMES BLOCKS WITH BOX

art nr	art / concept
year	2019
material	deal wood
rrp	€ 4.200

this piece is not shown at our exhibition during DDW 2019



STRIJP-T VASES as well as all the square stuff, we have also been able to acquire some thick-walled, round, glass test tubes from the old Philips glass laboratory in the neighbouring industrial area Strijp-T. It is a series of vases that is limited by the number of test tubes we were able to find: 52 small tubes, 160 middle-sized and four large ones.

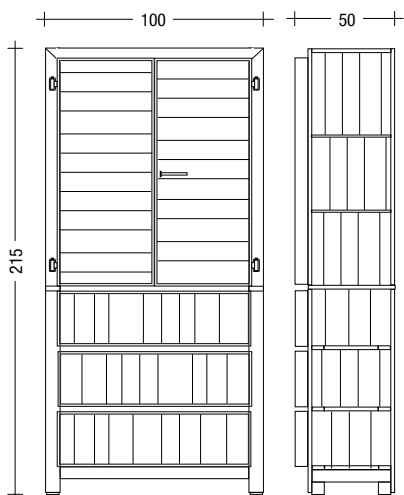
art nr	limited
year	2019
size	Ø 3,7 x 14 cm
material	copper / glass
rrp	euro 140

art nr	limited
year	2019
size	Ø 4,8 x 30,5 cm
material	copper / glass
rrp	euro 290



art nr	limited
year	2019
size	Ø 15 x 34,8 cm
material	copper / glass
rrp	euro 425



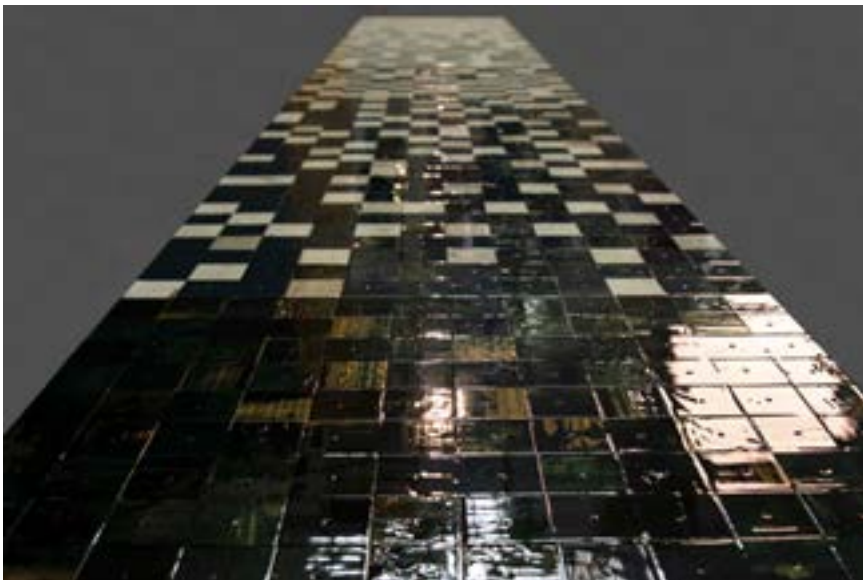


CLASSIC CUPBOARD IN SCRAPWOOD The Classic Cupboard was Piet Hein Eek's first piece exploring scrapwood material, and is meticulously crafted in Piet Hein Eek's studio using traditional wood-working techniques. It is produced without a lacquer finish for a full expression of the wood's texture. Each piece is unique, based on the material available at the time.

art nr	2400
year	1990
size	100 x 50 x 215 cm
material	scrapwood / pinewood
rrp	euro 4.281



color	available in various colors of scrapwood
details	2 doors + 3 large drawers
inside cabinet	10 small drawers + 2 shelves



40 x 40 CUBE SERIES

art nr	3890-77A
year	2019
size	48 x 48 x 48 cm
material	scrapwood
rrp	euro 5.938





art nr	3890-77B
year	2019
size	48 x 48 x 48 cm
material	scrapwood
rrp	euro 4.750



art nr	3890-77C
year	2019
size	48 x 48 x 48 cm
material	scrapwood
rrp	euro 5.938



art nr	3890-77D
year	2019
size	48 x 48 x 48 cm
material	scrapwood
rrp	euro 4.750

art nr	3890-77E
year	2019
size	48 x 48 x 48 cm
material	scrapwood
rrp	euro 4.750



art nr	3890-77F
year	2019
size	48 x 48 x 48 cm
material	scrapwood
rrp	euro 5.938



art nr	3890-77G
year	2019
size	48 x 48 x 48 cm
material	scrapwood
rrp	euro 4.750

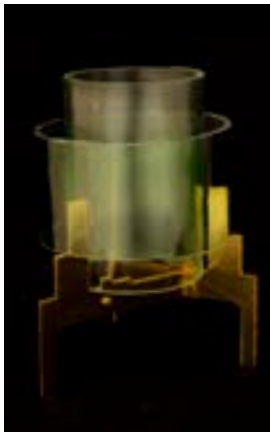




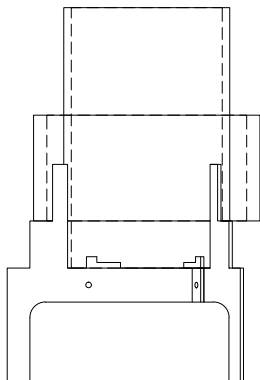
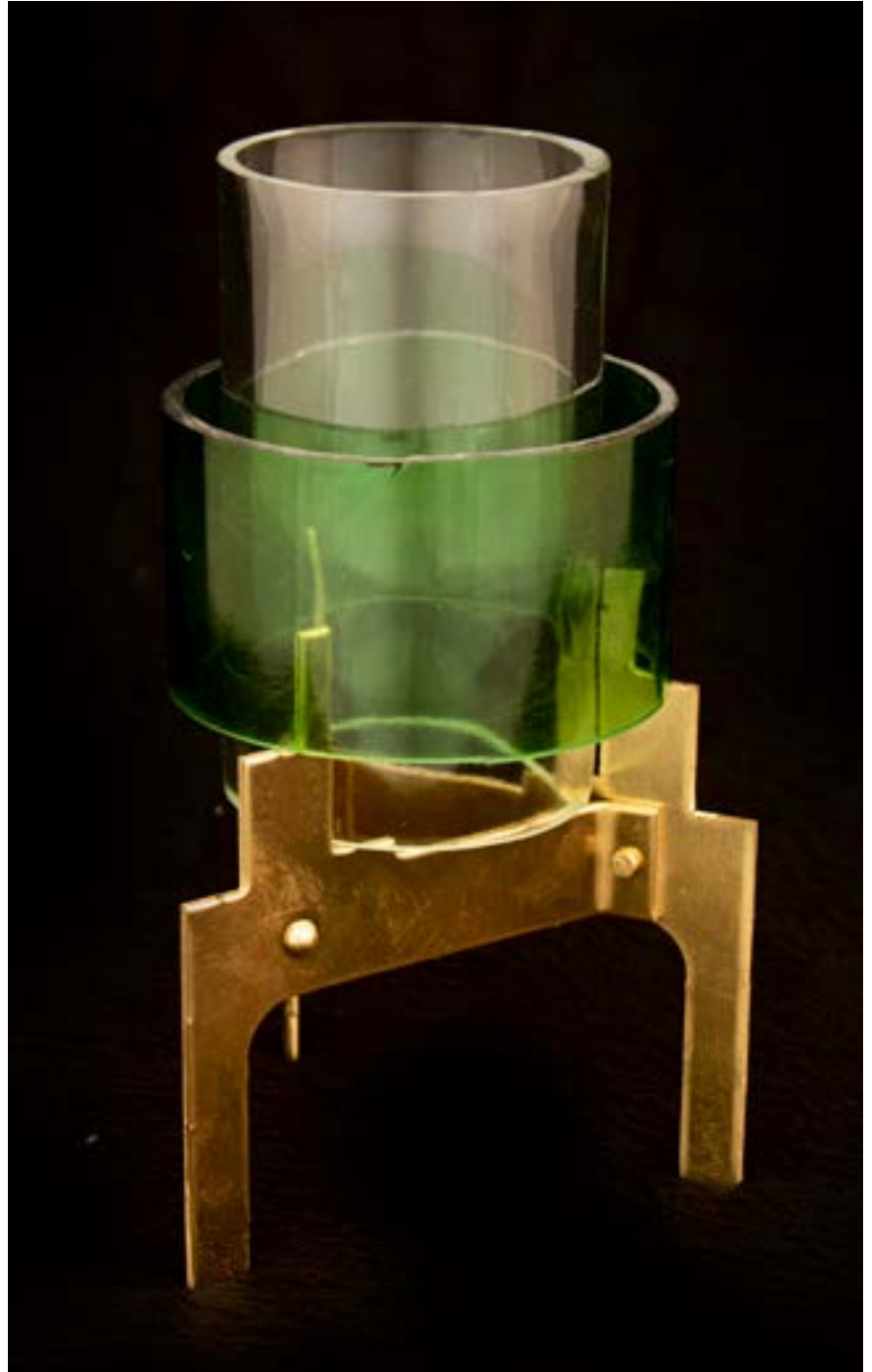
40 x 40 SIDE TABLE 2 COLORS

art nr	3890-76
year	2019
size	58 x 58 x 72 cm
material	scrapwood
rrp	euro 8.874



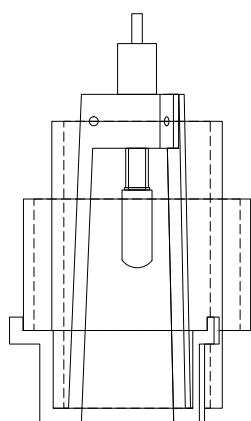
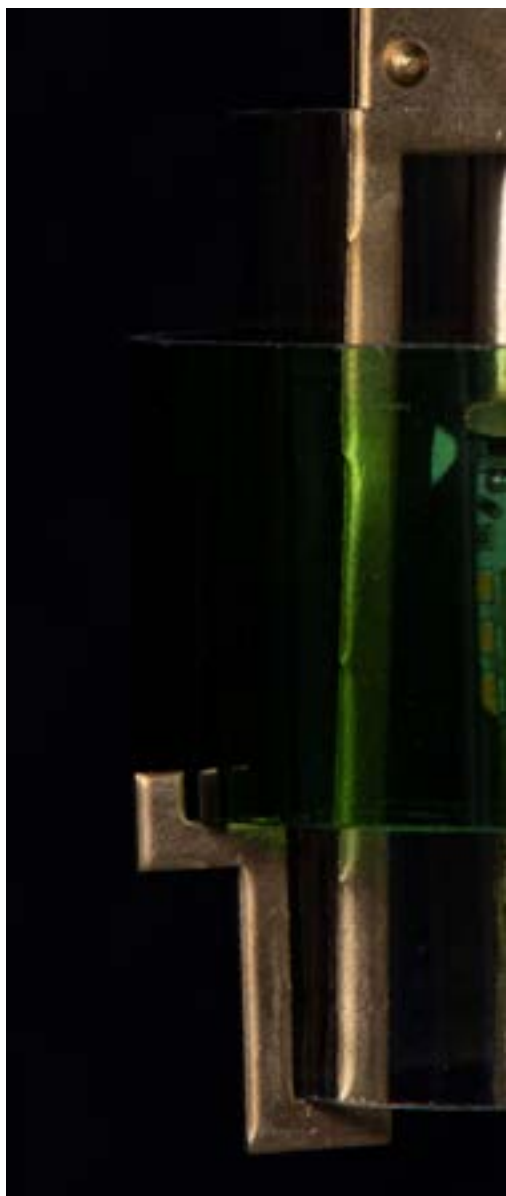


**CUT GLASS
CANDLEHOLDER**



art nr	-
year	2019
size	ø 9,5-12,10 x 19,8 cm
material	cut glass / brass
rrp	euro 89

art nr	-
year	2019
size	ø 9,5-12,10 x 19,8 cm
material	cut glass / brass
rrp	euro 139



CUT GLASS LAMP

art nr	-
year	2019
size	ø 9,5-12,10 x 19,8 cm
material	glass / brass
rrp	euro 149



MASSIVE CUT GLASS CHANDELIER



RAG VASES



art nr	unique / limited
year	2019
size	different sizes available
material	old tubes
rrp	euro 475

2019 AJUSTED 2009 CRISIS CHAIR Personally, I find one of the better collections but after checking the sales figures, it seems I am one of the few. Such a difference in opinion is never much fun, so I'm trying again. The 2009 crisis series, updated in 2019, will be presented during DDW this year. Worst case scenario is that the reintroduction becomes a non-selling classic.



we made prototypes in different types of wood:



scrapwood



cedar wood



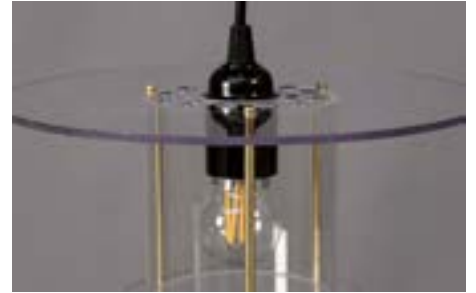
pine wood



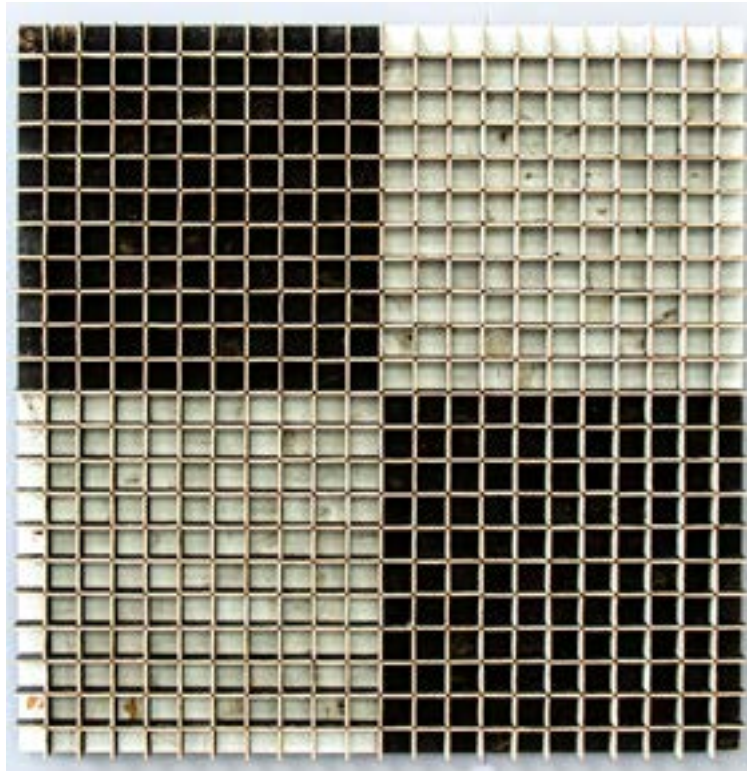
spruce wood

art nr	1652 (2019)
year	2019
size	40 x 48 x 85 (48) cm
material	spruce wood
rrp	euro 235

PLASTIC LAMP HANGING

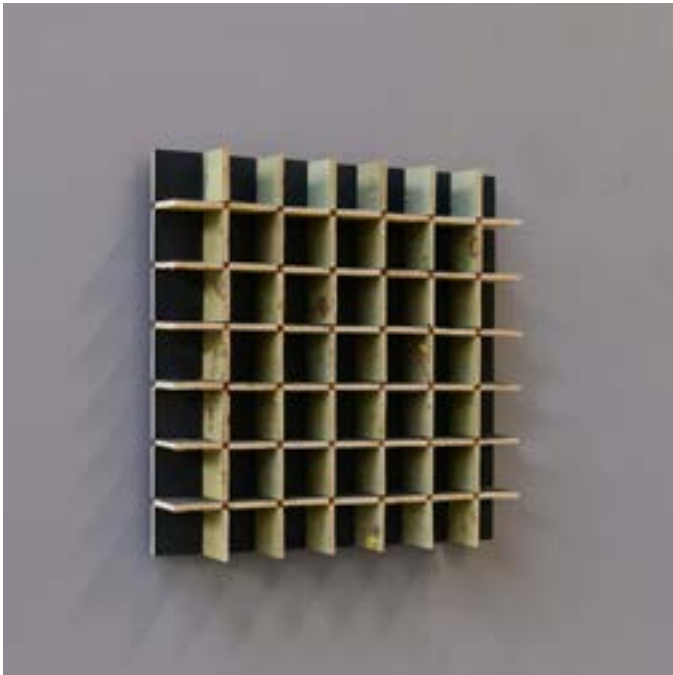
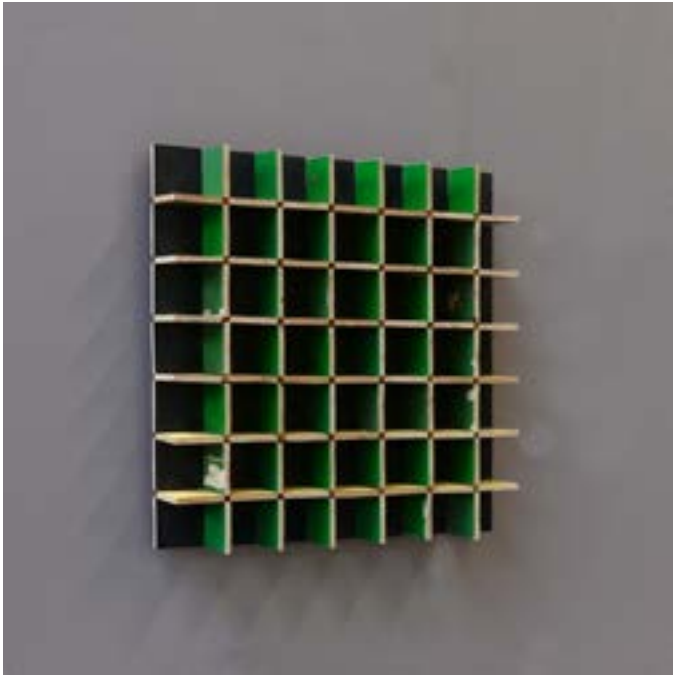


art nr	-
year	2019
size	ø 25 x 11 cm
material	plastic / brass
rrp	euro 130

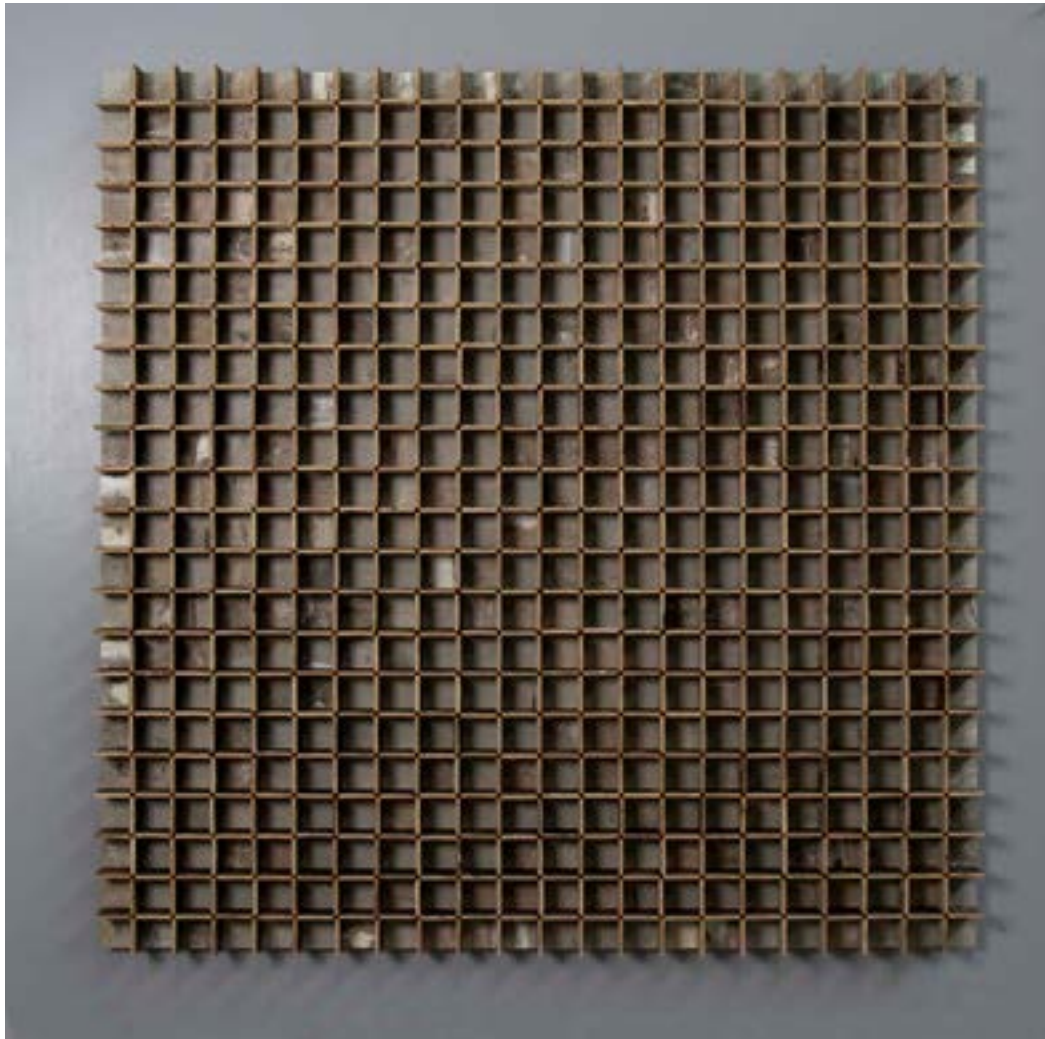


3D 40 x 40 PAINTING

art nr	3890-85
year	2019
size	298,5 x 98,5 cm
material	scrapwood
rrp	euro 10.500



art nr	3890-84
year	2019
size	26,5 x 26,5 cm
material	scrapwood
rrp	euro 3.200

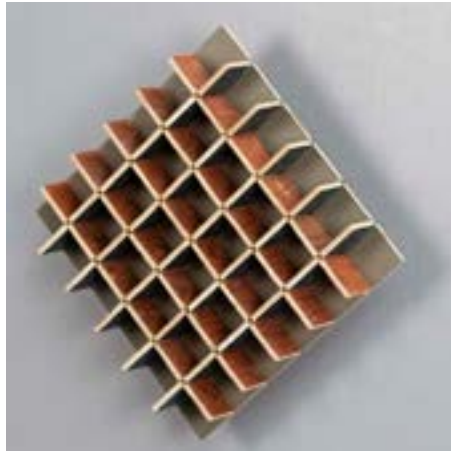


3D 40 x 40 PAINTING

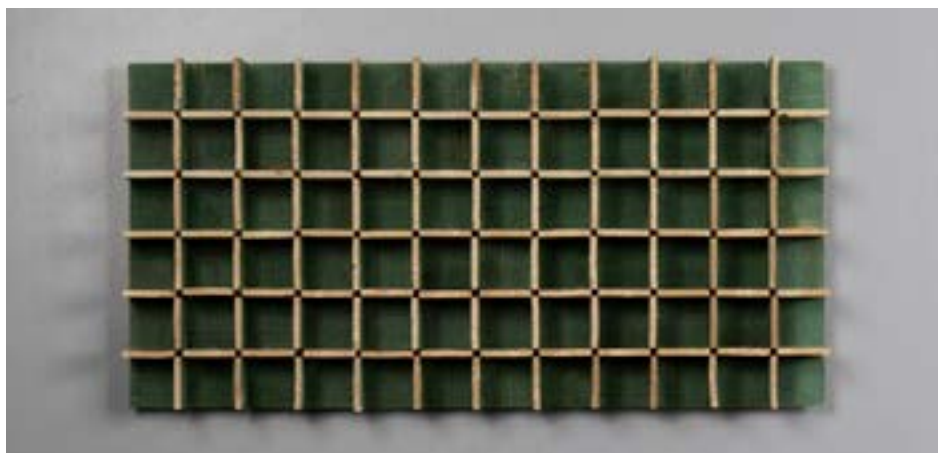
art nr	3890-66
year	2019
size	298,5 x 98,5 cm
material	scrapwood
rrp	POA

art nr	3890-64
year	2019
size	53,5 X 26,5 cm
material	scrapwood
rrp	POA





art nr	art (3890-67)
year	2019
size	26,5 x 26,5 cm
material	scrapwood
rrp	POA



art nr	art (3890-66)
year	2019
size	53,5 x 26,5 cm
material	scrapwood
rrp	POA





MODULAR CABINET this cabinet is constructed from identical sheets with a hole in each corner. They are assembled using lasered components and screws and bolts. Instead of the aluminium sheets we have used to make this cabinet, you could use any material at all, as long as the sheet is straight, as we have discovered. As the sheets are joined together corner to corner, their thickness doesn't really matter. The system is equally as conceptual as the other objects we are presenting, but it is also practical. They are packaged per four or six units in a box and you assemble them yourself. Yet another product that you have to put together yourself, even though they have never been successful for us. The four units can also be assembled horizontally to create a coffee table.

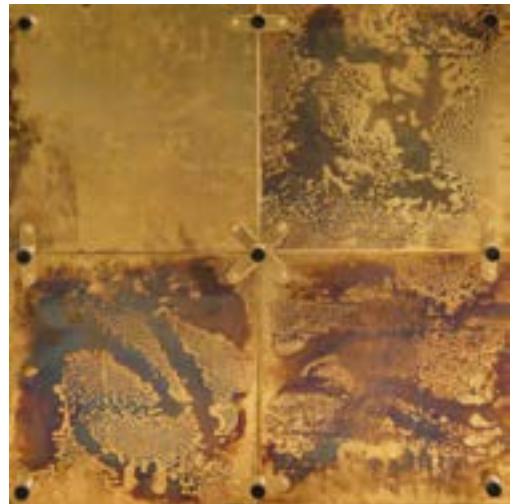
art nr	1420
year	2019
size	41 x 41 cm
material	aluminum
rrp	euro 4.100 (as shown)





MODULAR COFFEE TABLE

art nr	1421
year	2019
size	40 x 40 cm cubes
material	aluminum
rrp	price on request



available in different materials.

art nr 1425	aluminum
art nr 1426	brich wood
art nr 1427	copper
art nr 1428	brass
art nr 1429	plexiglass



INSIDE OUT TREE TRUNK The inside out bench we presented April 2018 in Milan. Later we made another one, but we wanted to show some variations on the *inside out* theme: a totem of square blocks and regular inside out blocks that you can use however you like. Turning a tree inside out is very efficient in terms of wood, and is a bit of fun for us, but not in terms of work. It costs a great deal of time and attention to turn a trunk inside out.



art nr	INSIDE OUT TOTEM - nr. 4
year	2018
size	36 x 36 x 36 cm
material	oak
rrp	euro 1.795 per block

art nr	INSIDE OUT BENCH - nr. 2
year	2018
size	108 x 26 x 45 cm
material	oak
rrp	euro 4.698

art nr	INSIDE OUT BENCH - nr. 3
year	2018
size	229,5 x 28,5 x 49 cm
material	oak
rrp	euro 4.7



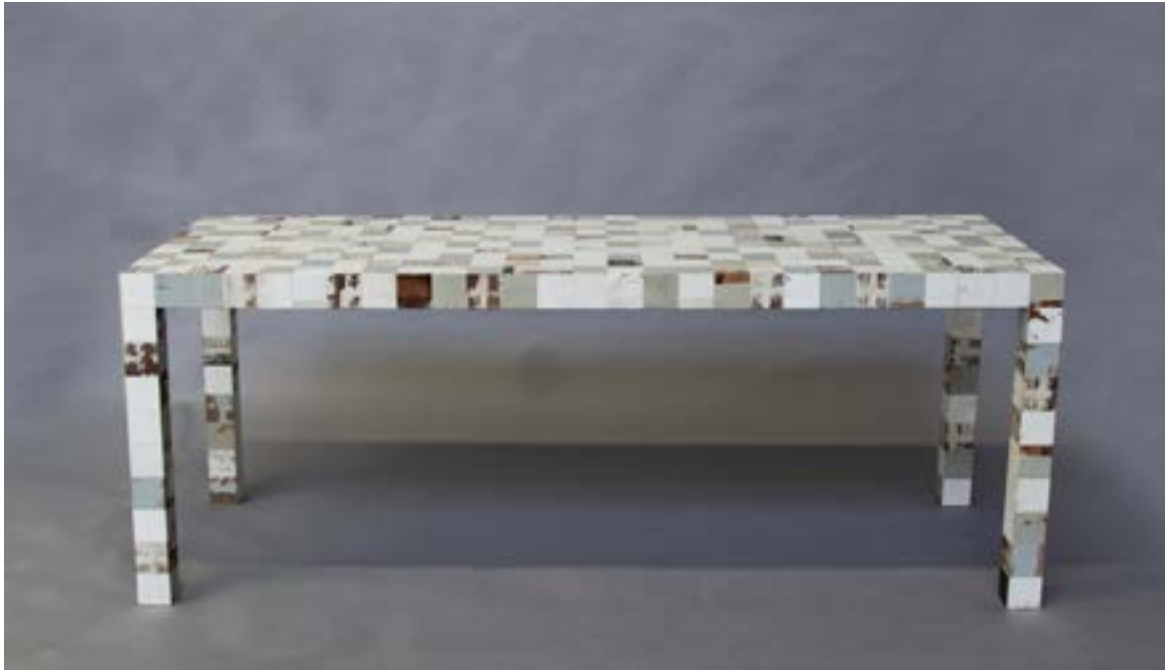
art nr	limited / unique
year	2019
size	35,5 x 35,5 x 209,90 cm
material	oak
rrp	euro 14.360



CUT ANTENNA TREE TRUNK

art nr	unique / art / concept
year	2019
size	45 round x 500 cm
material	salvaged wood
rrp	euro 4.500

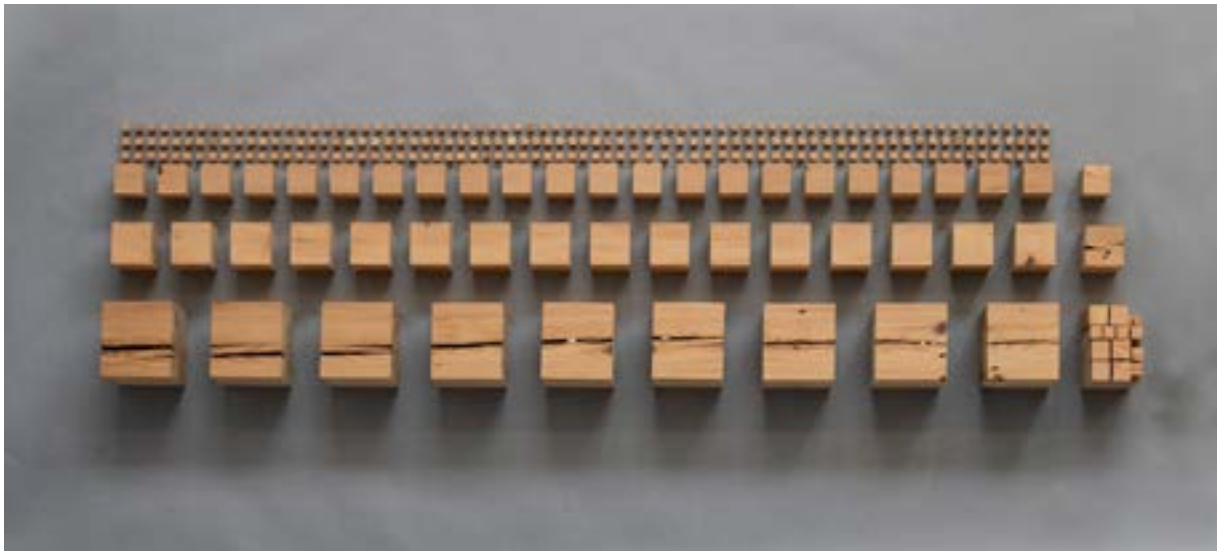
this piece is not shown at our exhibition during DDW 2019



78 x 78 WASTE WASTE TABLE

art nr	limited / unique
year	2019
size	210 x 78 x 78 cm
material	scrapwood
rrp	euro 12.372

this piece is not shown at our exhibition during DDW 2019



BEAM BECOMES BLOCKS

art nr	art / concept
year	2019
material	deal wood
rrp	€ 3.200



BEAM BECOMES BLOCKS we saw a beam repeatedly across the thickest part into exact squares so that we are left with nothing but cubes. Or a step further: we use a beam to saw a box and make a block box using nothing but cubes in the same way from the core wood. In other words, the maximum number of largest possible cubes you can get out of one beam. Is it all worth it? I don't know. If nothing else, it says something about how I think and work, and you must first have worked like this in order to say that. I couldn't have made this at the beginning of my career.

BEAM BECOMES BLOCKS WITH BOX

art nr	art / concept
year	2019
material	deal wood
rrp	€ 4.200

this piece is not shown at our exhibition during DDW 2019



STRIJP-T VASES as well as all the square stuff, we have also been able to acquire some thick-walled, round, glass test tubes from the old Philips glass laboratory in the neighbouring industrial area Strijp-T. It is a series of vases that is limited by the number of test tubes we were able to find: 52 small tubes, 160 middle-sized and four large ones.

art nr	limited
year	2019
size	Ø 3,7 x 14 cm
material	copper / glass
rrp	euro 140

art nr	limited
year	2019
size	Ø 4,8 x 30,5 cm
material	copper / glass
rrp	euro 290



art nr	limited
year	2019
size	Ø 15 x 34,8 cm
material	copper / glass
rrp	euro 425