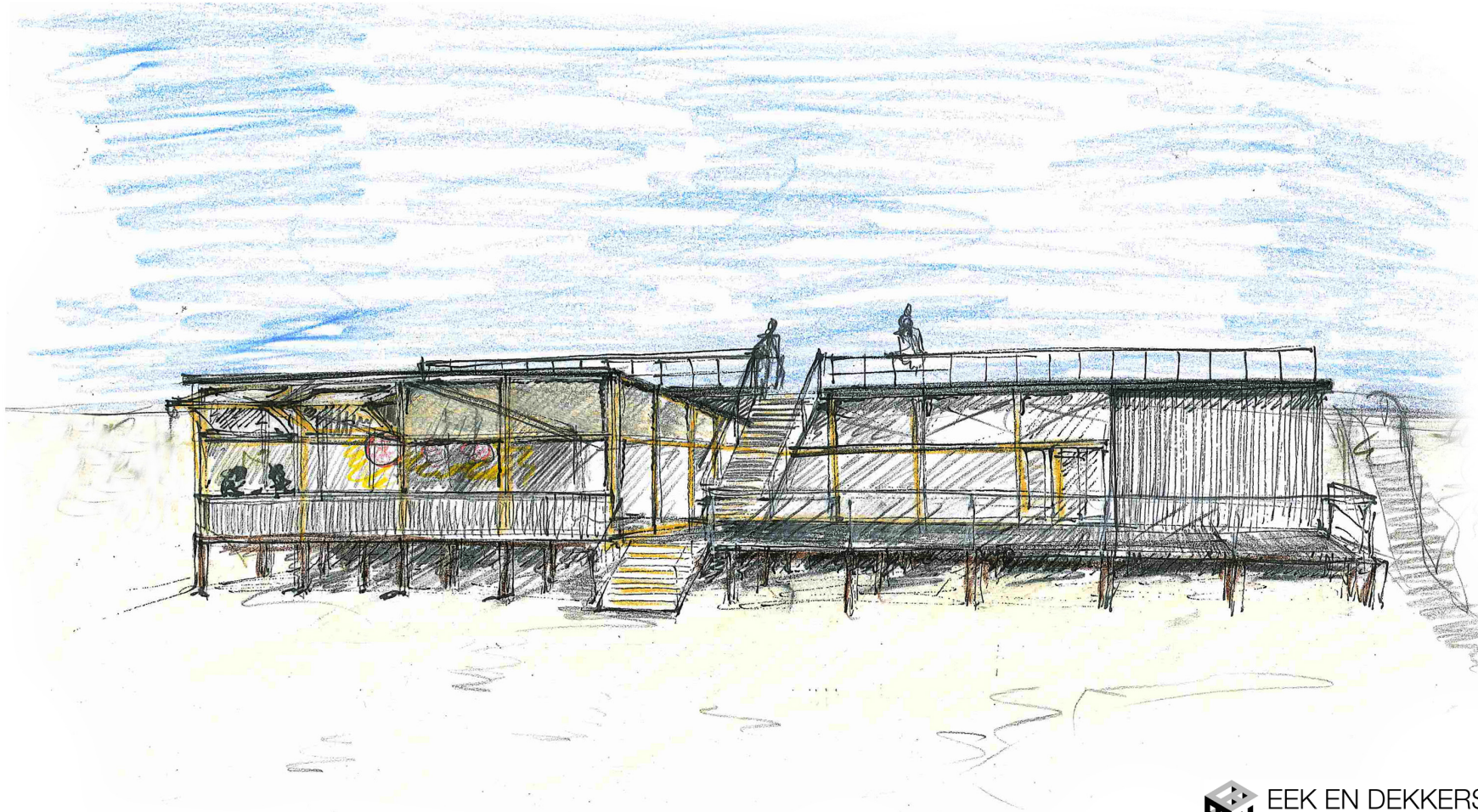


BEACH PAVILION

BERGEN AAN ZEE



EEK EN DEKKERS
(Piet Hein Eek Architectuur)

BEACH PAVILION

Location	Bergen aan Zee
Type	new build
Function	hospitality
Phase	under construction
Client	private

The new design for Strandpaviljoen Noord has been created around a panoramic view over the sea. The main volume of the pavilion is located over the full width of the poles and is limited in depth. The bar is placed centrally within the space, facing the sea.

In the summer situation, the pavilion can be almost completely opened up, which creates openness, with a minimal border between inside and outside space. Even though the façade will be closed during winter, the pavilion remains very light and transparent, exactly why Noord has been famous for years.

A roof terrace is situated across the entire width, on top of the main volume, which gives optimal views over the sea. The restaurant section consists of a secondary volume with a slightly sloping roof. The roof slopes towards the sea, so that the space opens up in this direction. In combination with the large windows, this creates an uninterrupted view of the beach and the ocean.

The bar and the kitchen are situated at the heart of the building and are completely open. The guests are always and everywhere in contact with the chef, and vice versa. This welcoming approach is the express wish of the customer and fits seamlessly with the transparent pavilion.

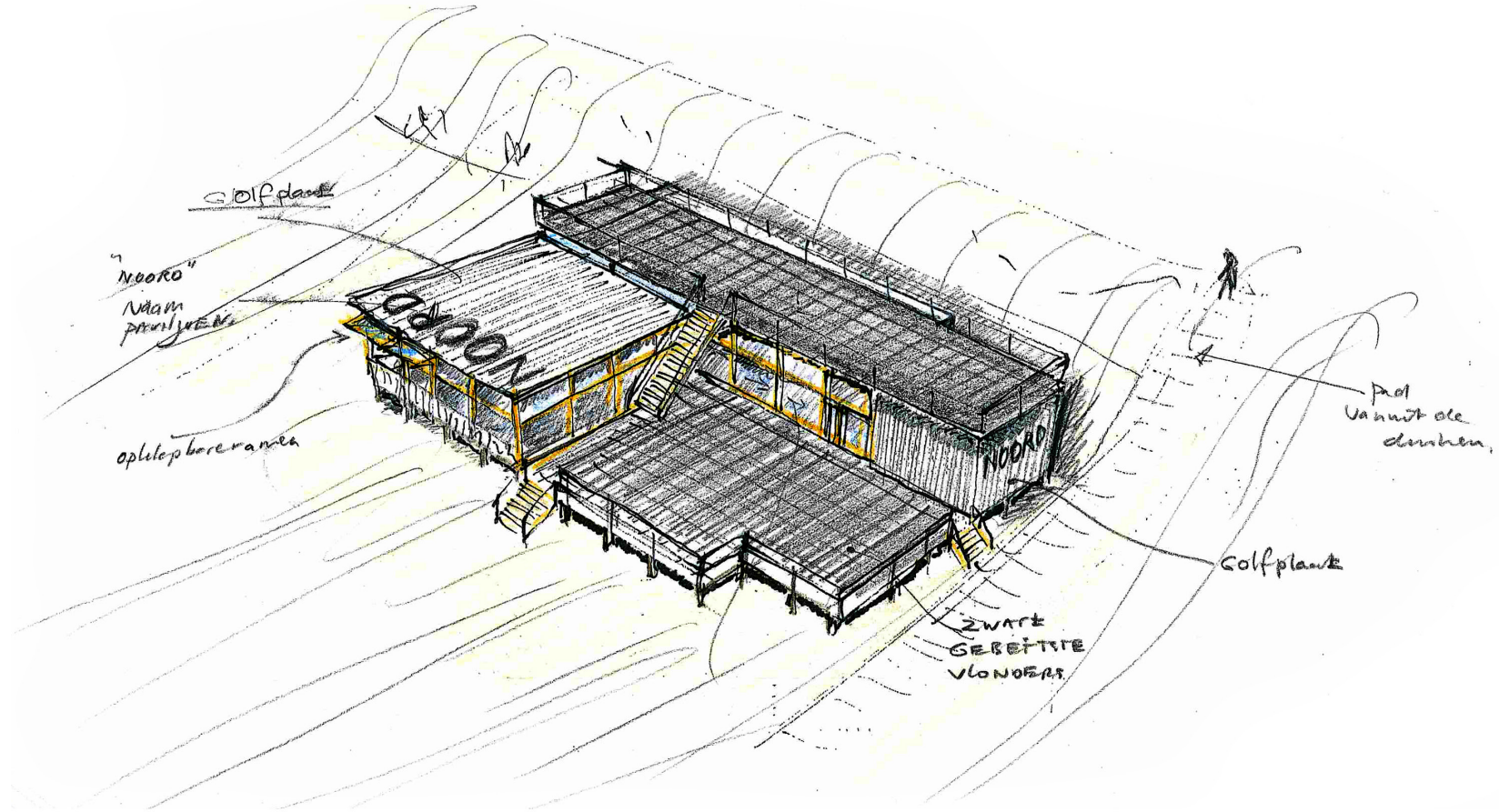
The materials used for the new pavilion are warm, fresh and light. The closed sections of the building will be made from white sheet material. The wooden boards of the terraces and floors will be stained black and the wooden window frames will remain natural.

The enormous transparent surfaces will bring lots of light to the interior and the steel construction will remain strikingly visible.

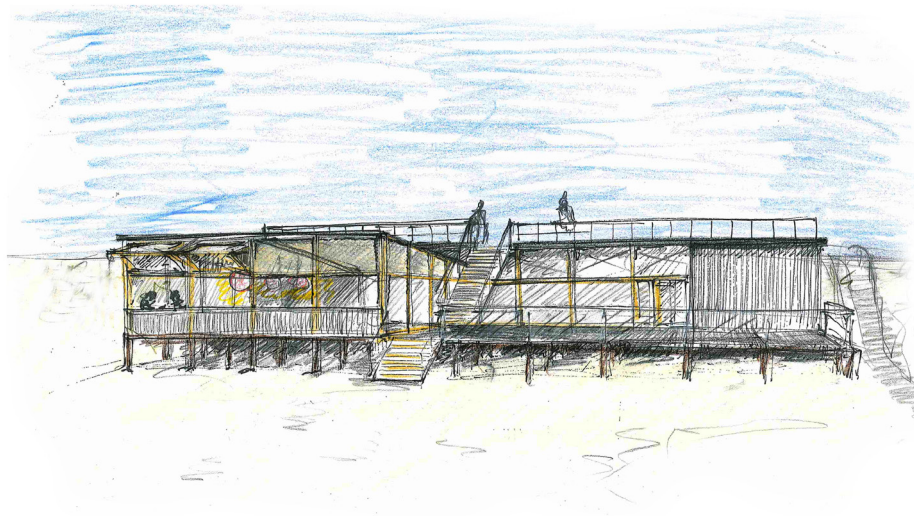
LOCATION



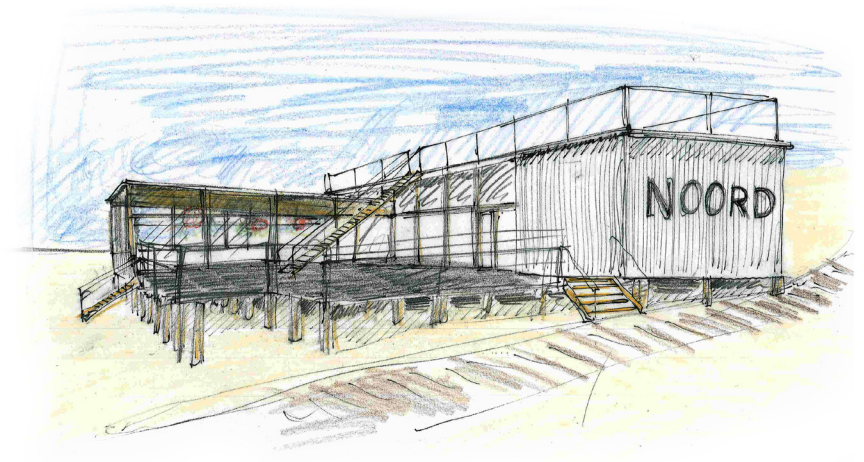
DESIGN



Impression beach pavilion

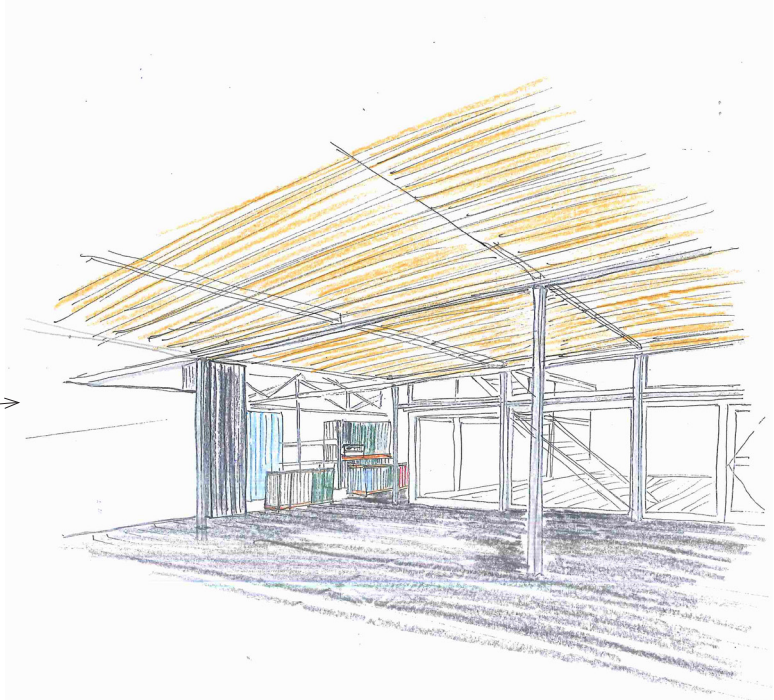
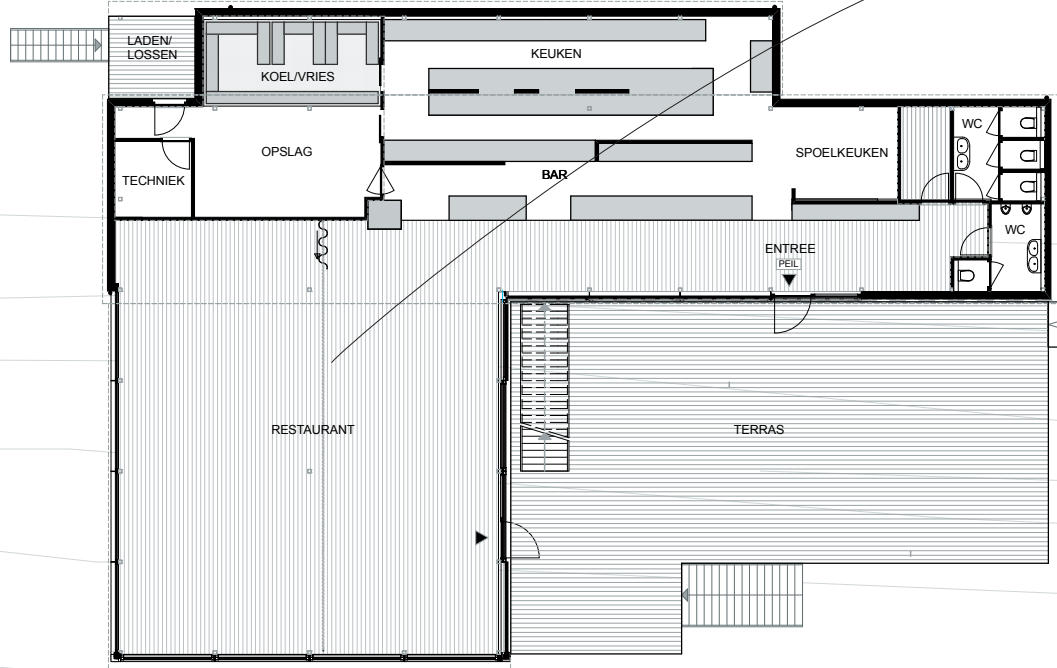


Impression of beach pavilion as seen from the beach

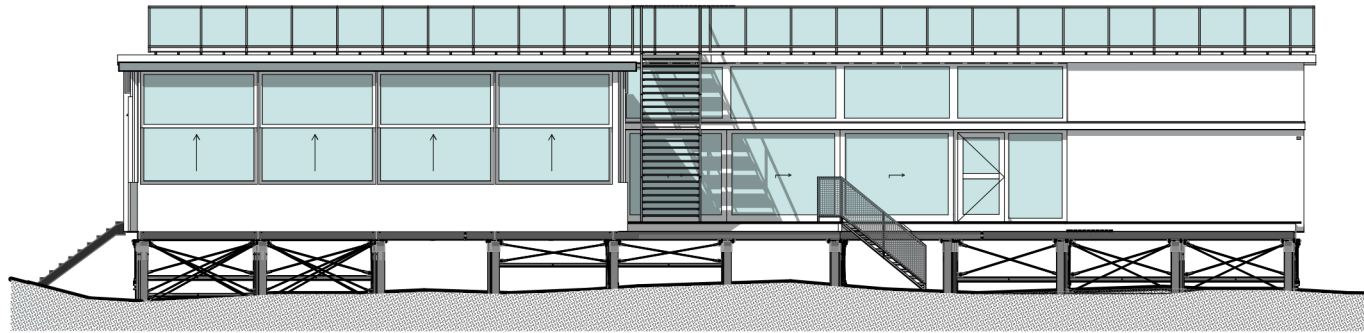


Impression from the entrance road to the pavilion

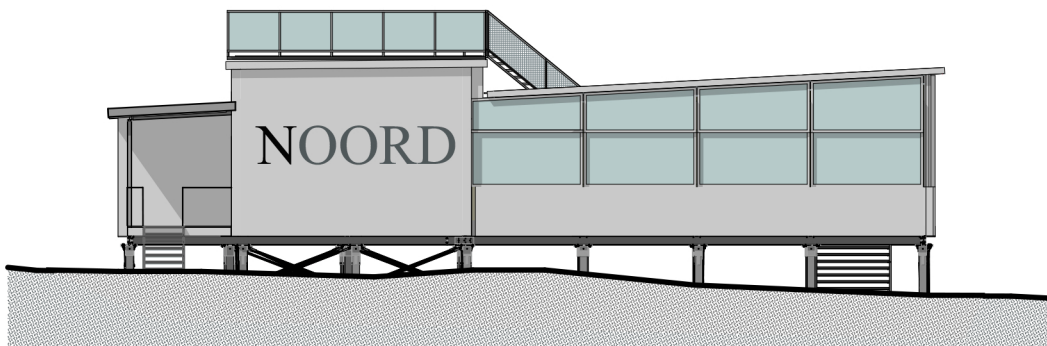
FLOOR PLAN



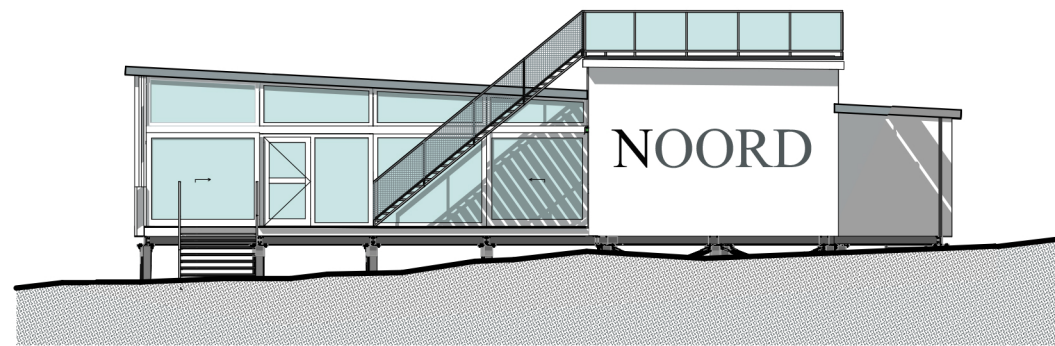
FACADES



Front facade of the beach pavilion as seen from the beach

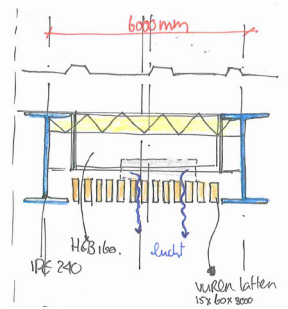
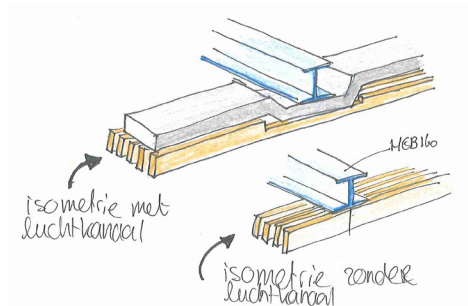


Left facade

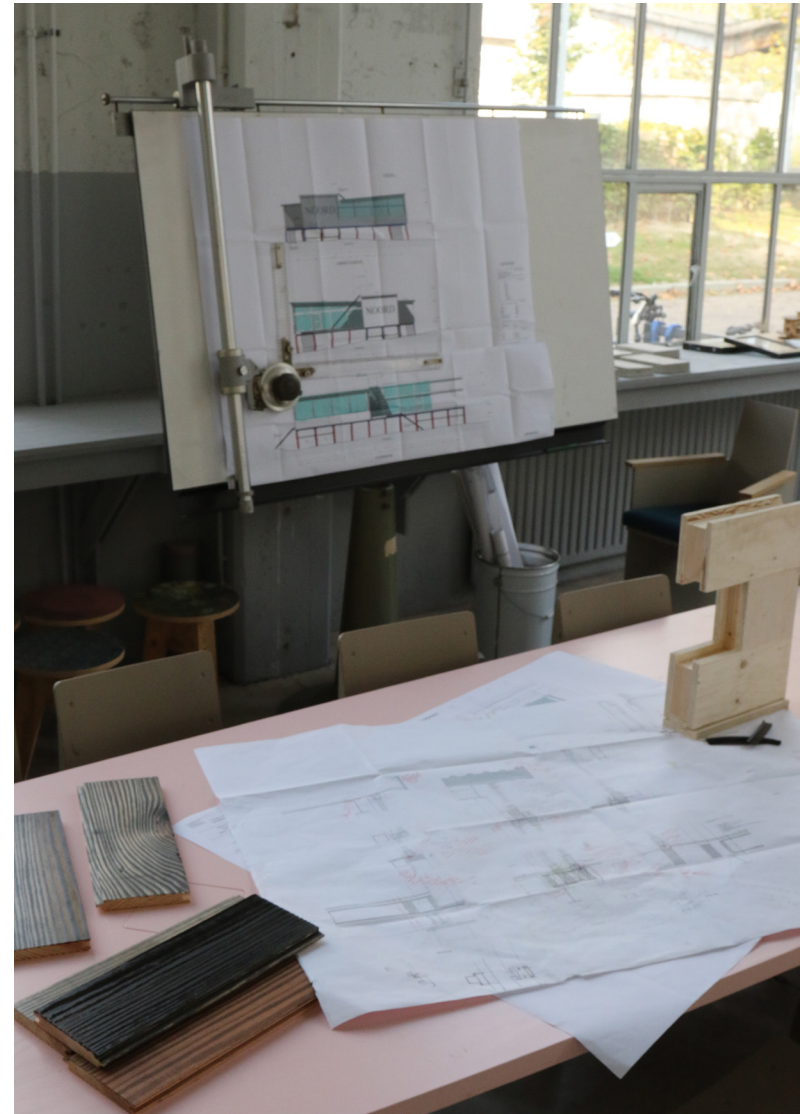


Right facade facing the entrance road of the beach

WORK IN PROGRESS



(detail-) drawings and mock-ups of the beach pavilion





Construction in progress



EEK EN DEKKERS
(Piet Hein Eek Architectuur)