



PIET HEIN EEK

DESIGN MIAMI/BASEL
2011



Every Piet Hein Eek design has an anecdote to share on how the product came into being from a combination of materials, techniques and craftsmanship. These tales are simple stories, almost always starring the material used. Whereas, in 1989, scrap wood turned out to be invaluable and formed the inspiration for one of two final exam projects, the same basic principle continues to hold true today. What at the time appeared to be an intuitive preference turned out to be one of the most important themes of our time. As the world's population grows exponentially, raw materials are disappearing at perhaps an even faster rate. Reason enough to handle materials with respect and develop the processes that result in products in a pragmatic fashion.



Pipe bench and armchair

The pipe armchair is made of old pipes that were salvaged from the building we bought and renovated last year. In spite of the huge number of pipes we discarded, we also managed to save quite a large quantity. The first pipe piece we produced was the pipe bar for the restaurant. This was followed by the design for this armchair, bar chairs, small bar tables and, finally (for now at least), the pipe bench (although we have plenty of other ideas for other objects). The models are numbered consecutively by name (i.e. armchair no. 1, bench no. 2, and so on).



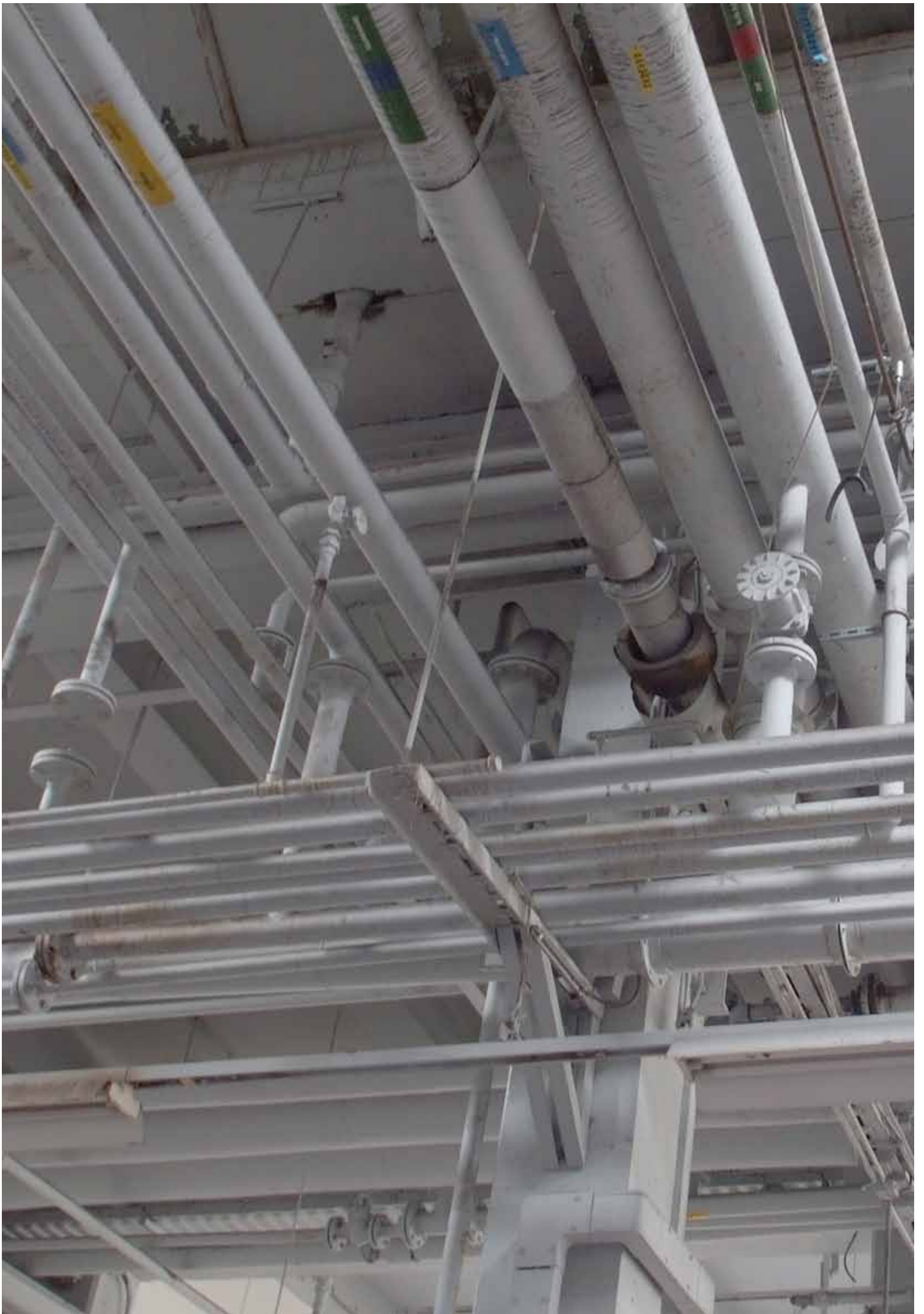
Pipe bench 3



Pipe armchair 1



Pipe bench 2





Design of pipe table, chair with armrests, chair and stools

Materials:

Tubes: dismantled from our building

Fabric: old awning from the buildings demolished around us.

Tabletop: recycled beams





Chunky beam armchair/bench, armchair and bench

Chunky beam armchair

The chunky beam armchair is part of a series of objects made from enormous old beams. Since there is only a limited stock of these beams, the series is limited. A chunky beam bench, as well as a number of other objects, is also being produced. The idea is inspired by a large number of beams we purchased a few years back and which we had been at a loss at what to do with ever since. So this back-to-basics design, in all its simplicity, is the result of a rather long process of designing, experimenting and producing. The models are numbered consecutively by name (i.e. armchair no. 1, bench no. 2, and so on).



Chunky beam bench

The chunky beam bench is part of a series of objects made from enormous old beams. Since there is only a limited stock of these beams, the series is limited. A chunky beam armchair, as well as a number of other objects, is also being produced. The models are numbered consecutively by name (i.e. armchair no. 1, bench no. 2, and so on).



steel



3 left over metal paintings.

These three paintings of steel and stainless steel are the latest three pieces created as part of the scrap project.

The scrap project was launched in 2000 and was born out of the desire to escape the everyday necessity to work as efficiently as possible.

In the race to work as little as possible for as much money as possible, less and less attention is paid to materials and residual materials are often written off as waste. It is cheaper to saw off large numbers of small pieces from one large board than to save small pieces of wood, remember where you put them and then select the usable pieces to make a leg out of. I figured I'd turn the whole thing around instead.

Materials are invaluable and work is free.

This way, you get to spend as much time as you want.

The piece is the result of an endless repetition of actions.

Whereas, normally, as little attention as possible would be paid to these materials, the value of these pieces is based 100% on the patience of a saint.



steel/stainless steel



stainless steel