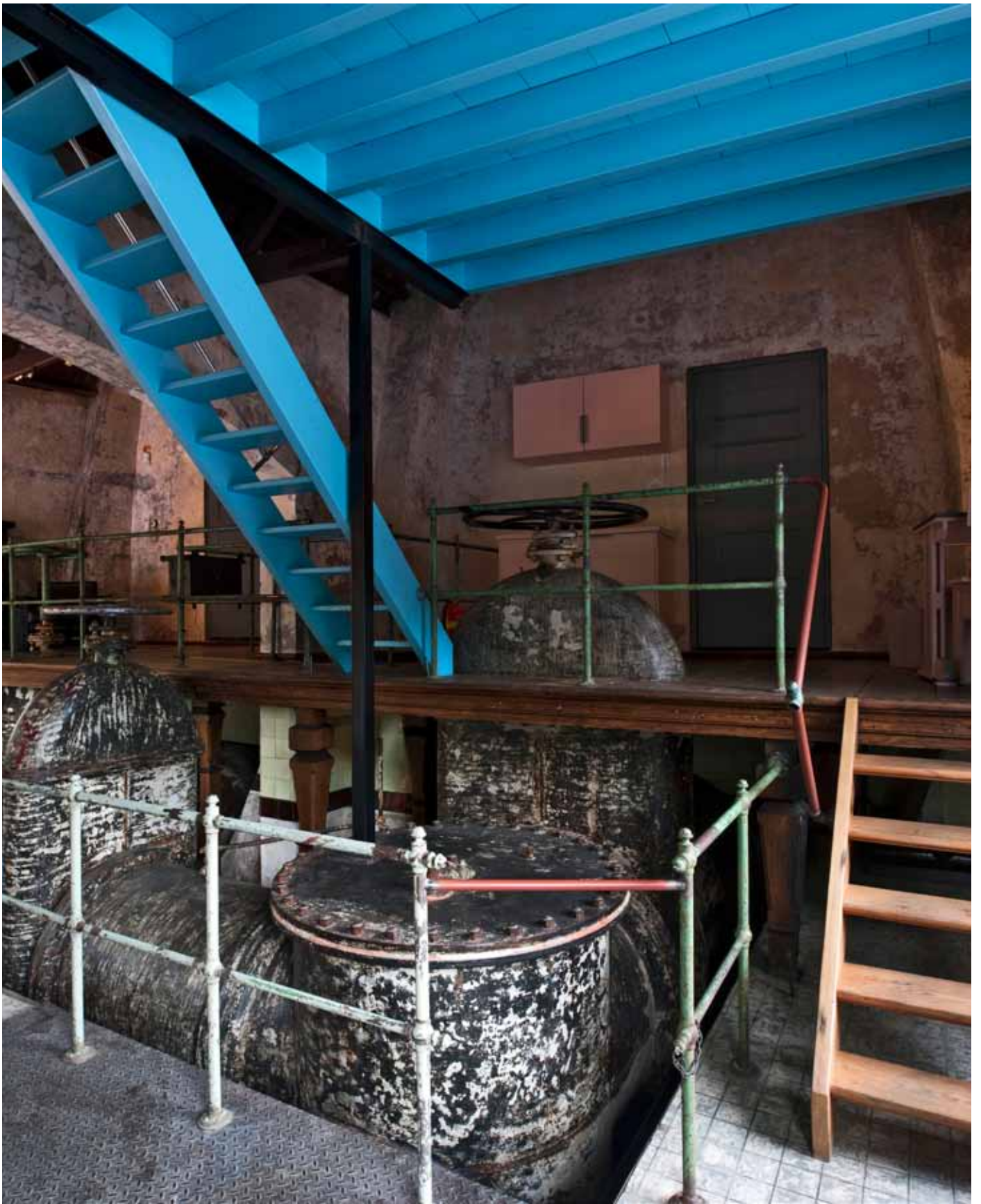
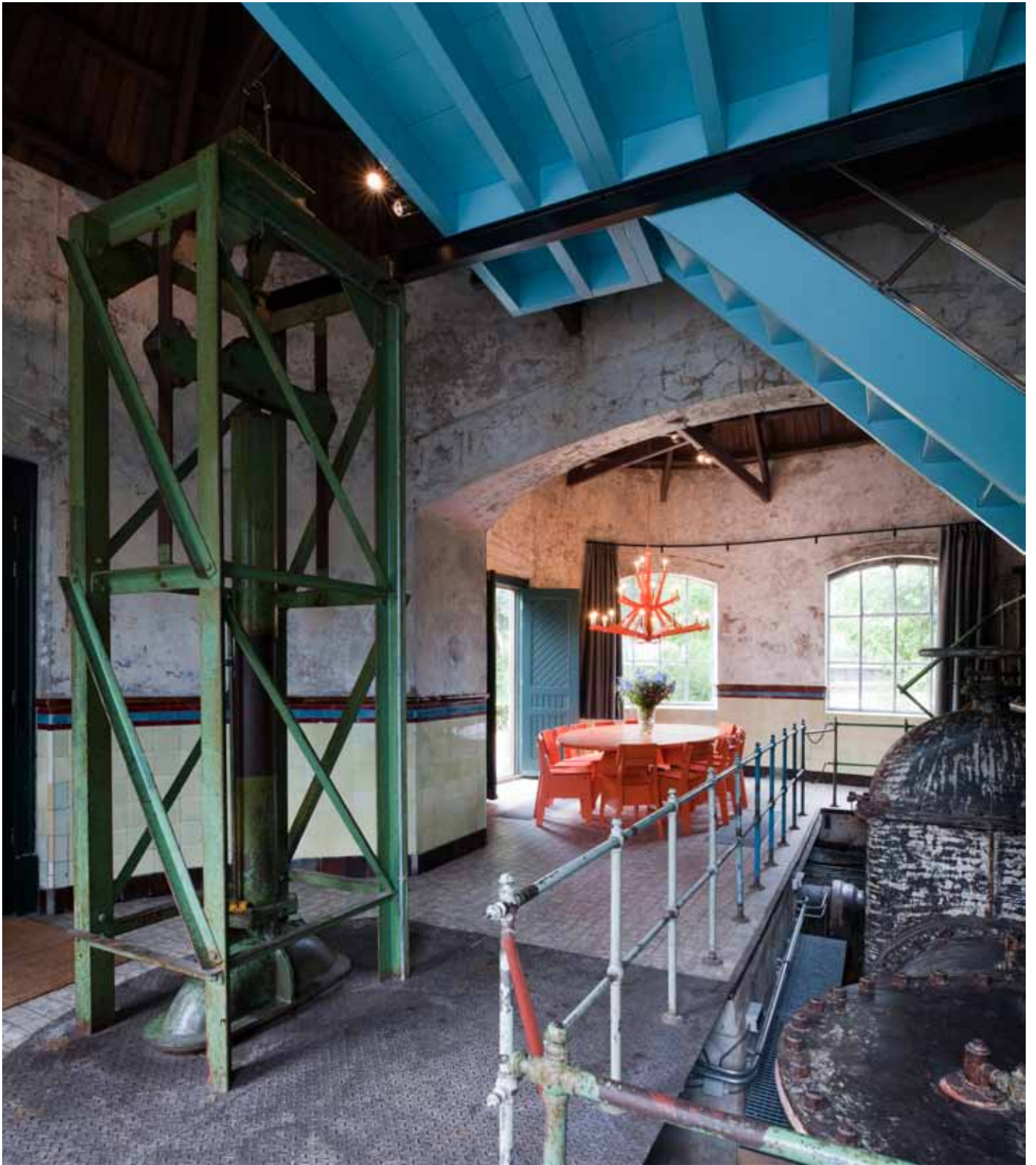




Year:	2013
Assigned by:	Westergasfabriek
Place:	Amsterdam
Photos by:	Thomas Mayer





The use of different colour sections makes the furniture stand out against the old Leidinghuis.



For the first time we chose to use a different colour for the Crisis furniture than we were used to. This made us decide that from now on customers were allowed to choose their own colour for the Crisis furniture. It was also the first time that we delivered upholstered chairs. It now also an option for our customers.

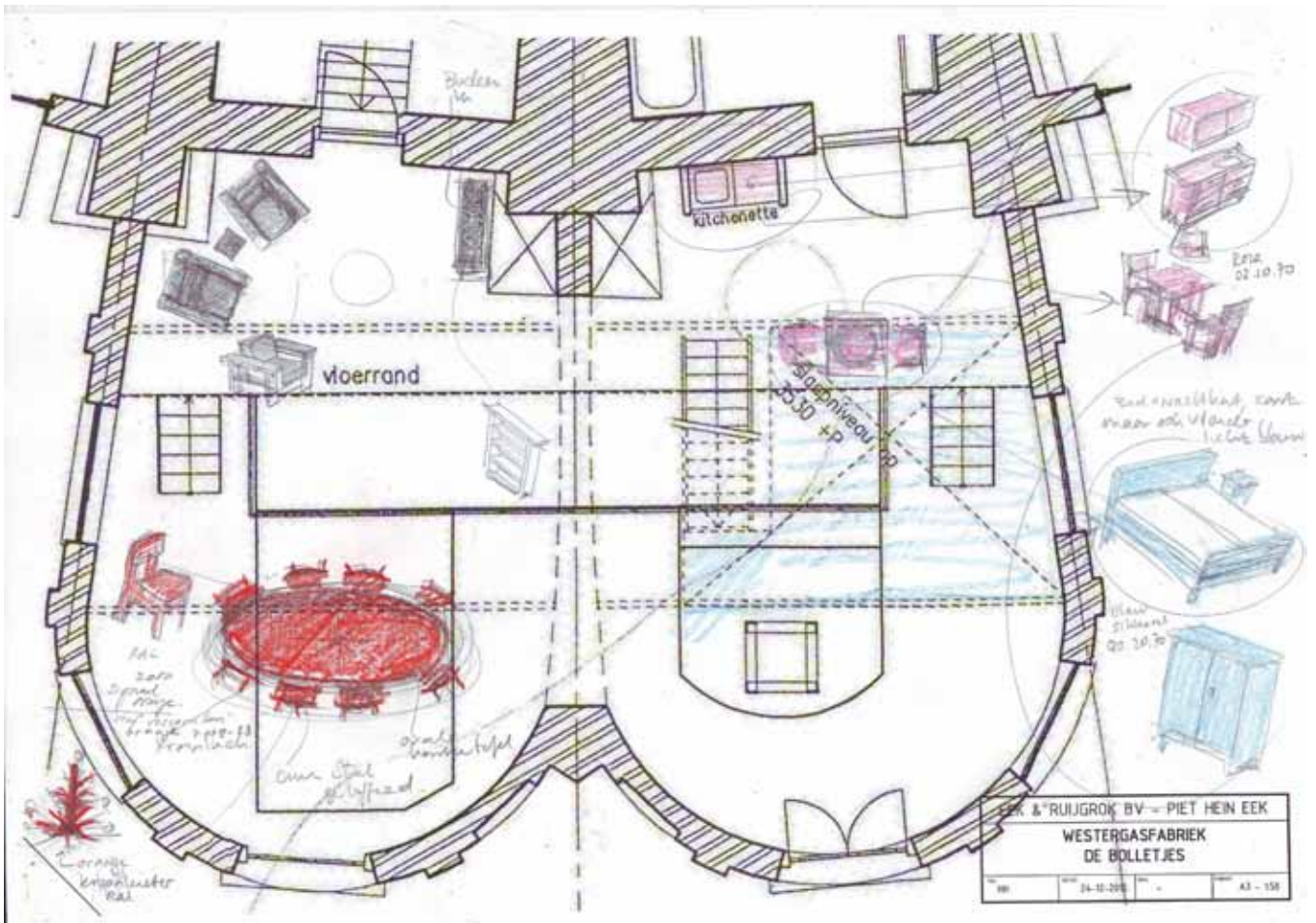


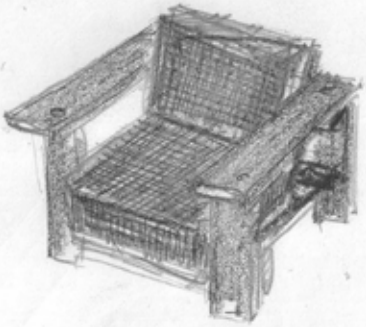
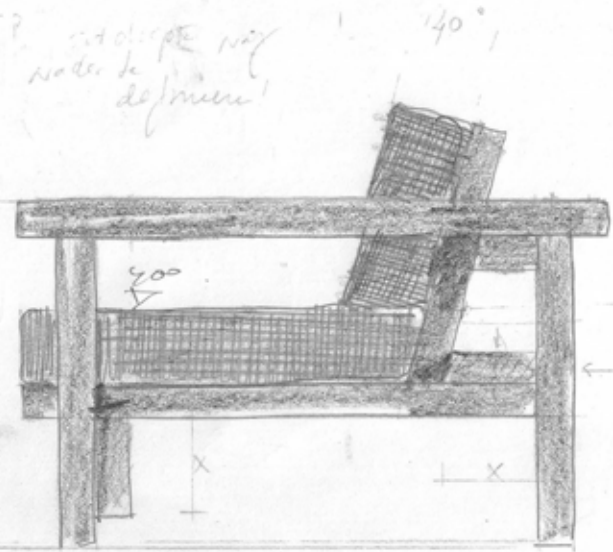
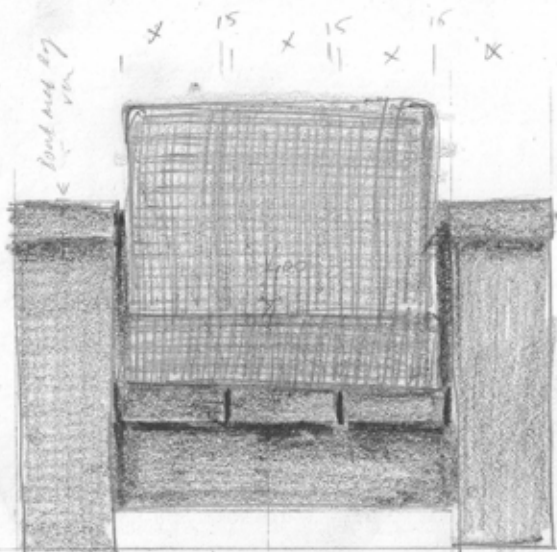














For more information:

Eek & Ruijgrok
Halvemaanstraat 30
5651 BP Eindhoven
Tel: 0031-40-2856610
Fax: 0031-40-2859460
e-mail: info@pietheineek.nl

AND

Thomas Mayer
info@thomasmayerarchive.de